

10. FOR SPECIFIC INFORMATION CONTACT SALES.
9. COMPLETE ASSEMBLY WEIGHT W/ DECK RING, 40.9LBS/ 18.5K.
8. DOGGING PRESSURE FULLY ADJUSTABLE.
7. HANDLE POSITION TOPSIDE INDICATES WHETHER DOGGING MECHANISM IS IN OPEN OR CLOSED POSITION.
6. ALUMINUM ALLOY MECHANISM SHOWN.
5. FLUSH, WATERTIGHT CONSTRUCTION.
4. INTEGRAL TOPSIDE "T" HANDLE STANDARD, OTHER TOPSIDE ACTUATION AVAILABLE.
3. CAST ALUMINUM ALLOY FLANGE. FLANGE CAN BE DRILLED FOR BOLTED INSTALLATIONS OR WELDED TO ALUMINUM.
2. QUICK-ACTING, MECHANISM ENGAGES OR DISENGAGES IN QUARTER-TURN OF CENTER SPINDLE.
1. 18" X 24" CLEAR OPENING, ALL DIMENSIONS SHOWN SUBJECT TO CASTING VARIATION AND ARE REFERENCE ONLY.

NOTES: UNLESS OTHERWISE SPECIFIED.

CUSTOMER APPROVAL

Signature: \_\_\_\_\_

Date: \_\_\_\_\_

IMPORTANT! THIS DRAWING SUPERSEDES ALL OTHER DOCUMENTS. By signing this approval you accept and agree that the dimensions and details shown are correct and properly fit your application, regardless of any differences between this drawing and any contract specifications. Should you see any errors in the drawing, or have any questions, please contact your Freeman Marine sales engineer for clarification.

REV.	DESCRIPTION	DATE	DRAWN
A	REDRAWN IN SOLIDWORKS	22JUL09	GJM
B	UPDATE GEN NOTES & B.O.M.	28SEP11	PPC

SPECIFICATIONS SUBJECT TO CHANGE WITHOUT NOTICE.

PROJECTION

UNLESS OTHERWISE SPECIFIED DIMENSIONS ARE IN INCHES. TOLERANCES FOR ROUGH AND CLEAR OPENING: .125 INCH. ALL OTHERS ARE:

.X	.XX	.XXX	ANGLES
±.1	±.03	±.010	±2°

DO NOT SCALE DRAWING

**FREEMAN MARINE EQUIPMENT, INC.**

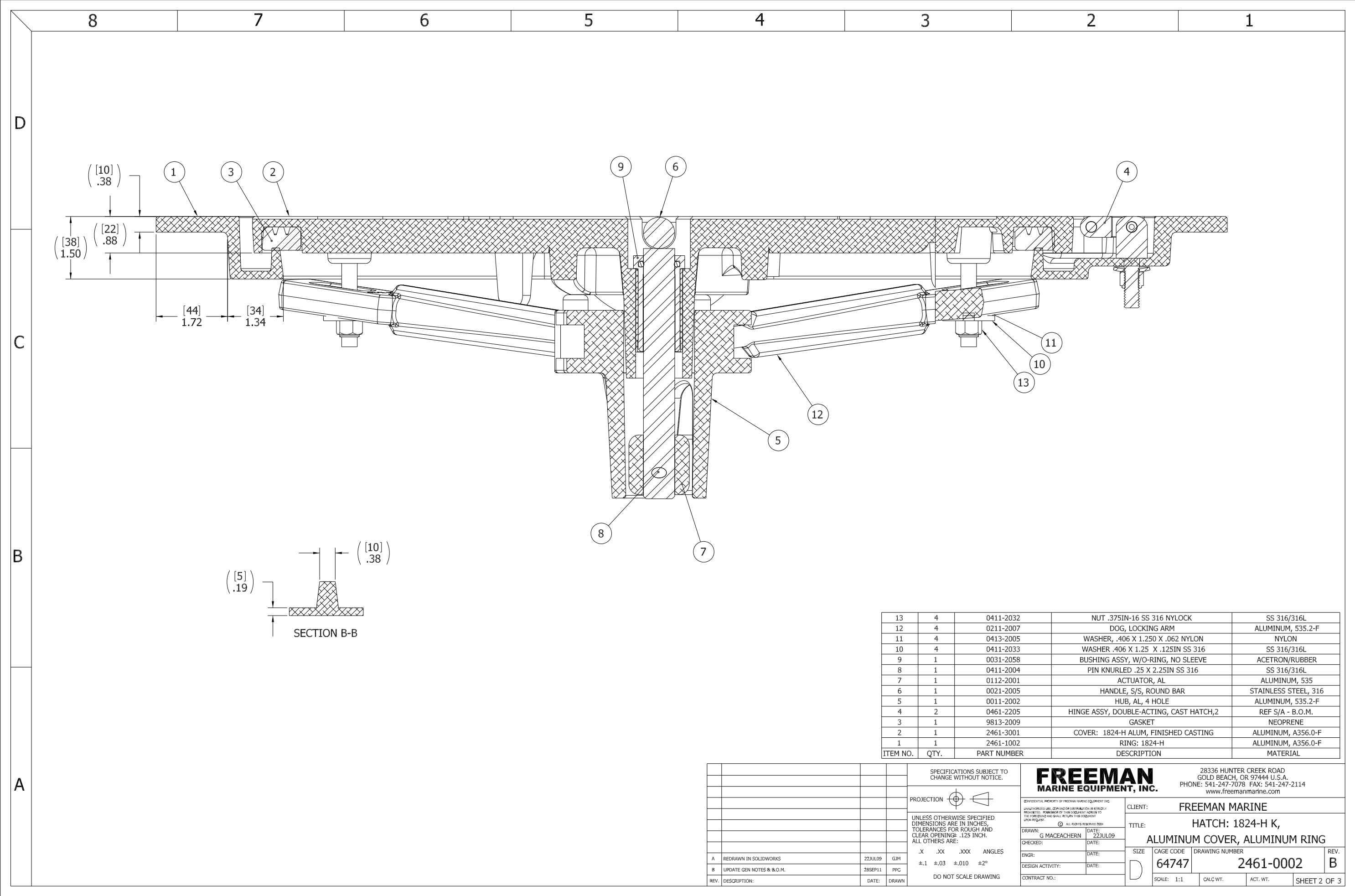
28336 HUNTER CREEK ROAD  
GOLD BEACH, OR 97444 U.S.A.  
PHONE: 541-247-7078 FAX: 541-247-2114  
www.freemanmarine.com

CLIENT: FREEMAN MARINE

TITLE: HATCH: 1824-H K,  
ALUMINUM COVER, ALUMINUM RING

SIZE	CAGE CODE	DRAWING NUMBER	REV.
D	64747	2461-0002	B

SCALE: 1:3    CALC. WT.    ACT. WT.    SHEET 1 OF 3



ITEM NO.	QTY.	PART NUMBER	DESCRIPTION	MATERIAL
13	4	0411-2032	NUT .375IN-16 SS 316 NYLOCK	SS 316/316L
12	4	0211-2007	DOG, LOCKING ARM	ALUMINUM, 535.2-F
11	4	0413-2005	WASHER .406 X 1.250 X .062 NYLON	NYLON
10	4	0411-2033	WASHER .406 X 1.25 X .125IN SS 316	SS 316/316L
9	1	0031-2058	BUSHING ASSY, W/O-RING, NO SLEEVE	ACETRON/RUBBER
8	1	0411-2004	PIN KNURLED .25 X 2.25IN SS 316	SS 316/316L
7	1	0112-2001	ACTUATOR, AL	ALUMINUM, 535
6	1	0021-2005	HANDLE, S/S, ROUND BAR	STAINLESS STEEL, 316
5	1	0011-2002	HUB, AL, 4 HOLE	ALUMINUM, 535.2-F
4	2	0461-2205	HINGE ASSY, DOUBLE-ACTING, CAST HATCH,2	REF S/A - B.O.M.
3	1	9813-2009	GASKET	NEOPRENE
2	1	2461-3001	COVER: 1824-H ALUM, FINISHED CASTING	ALUMINUM, A356.0-F
1	1	2461-1002	RING: 1824-H	ALUMINUM, A356.0-F

SPECIFICATIONS SUBJECT TO CHANGE WITHOUT NOTICE.

PROJECTION

UNLESS OTHERWISE SPECIFIED DIMENSIONS ARE IN INCHES. TOLERANCES FOR ROUGH AND CLEAR OPENINGS: .125 INCH. ALL OTHERS ARE:  
 .X .XX .XXX ANGLES  
 ±.1 ±.03 ±.010 ±2°  
 DO NOT SCALE DRAWING

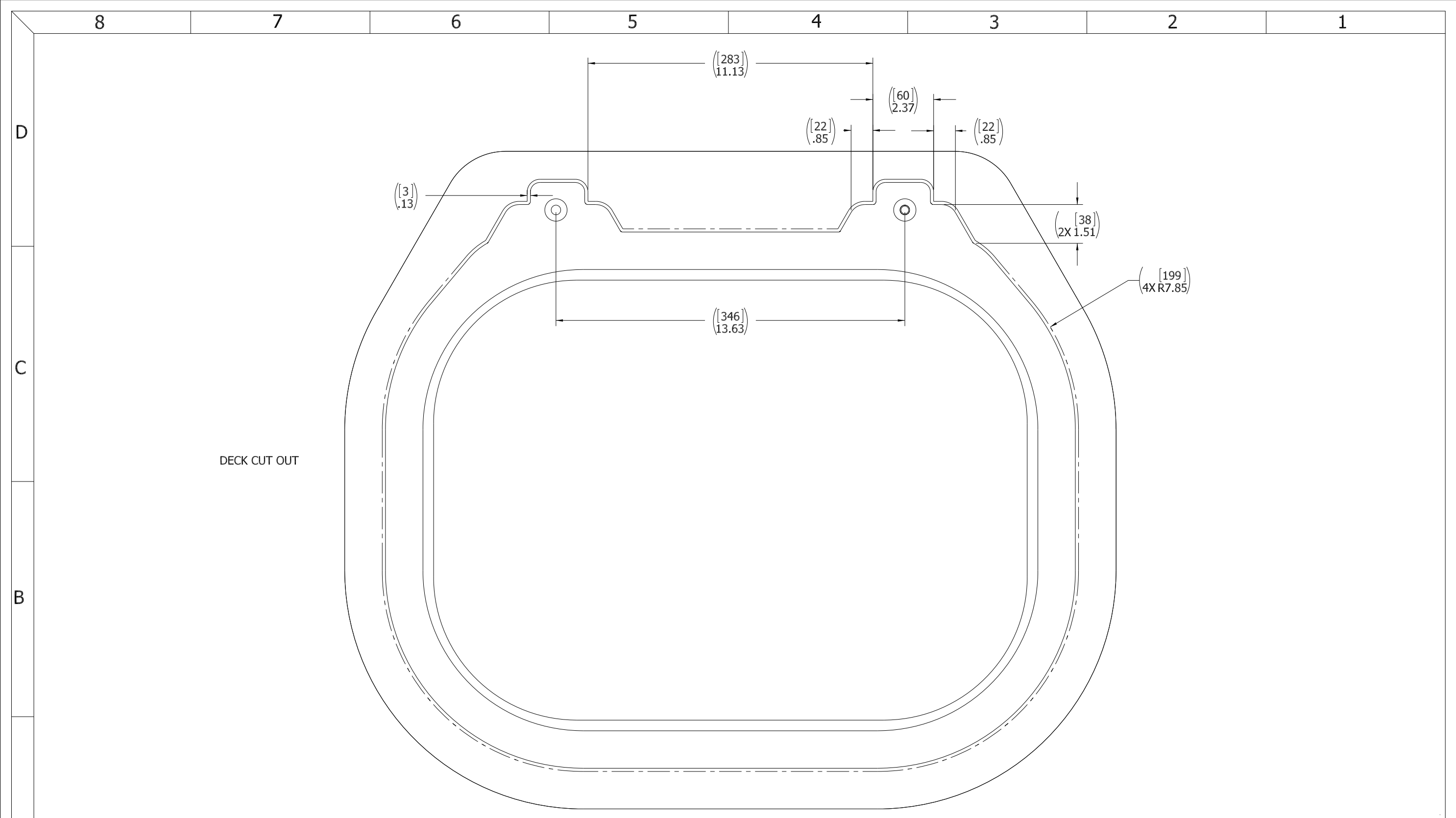
**FREEMAN MARINE EQUIPMENT, INC.**  
 28336 HUNTER CREEK ROAD  
 GOLD BEACH, OR 97444 U.S.A.  
 PHONE: 541-247-7078 FAX: 541-247-2114  
 www.freemanmarine.com

CLIENT: FREEMAN MARINE  
 TITLE: HATCH: 1824-H K, ALUMINUM COVER, ALUMINUM RING

SIZE	CAGE CODE	DRAWING NUMBER	REV.
D	64747	2461-0002	B

SCALE: 1:1    CALC. WT.    ACT. WT.    SHEET 2 OF 3

REV.	DESCRIPTION:	DATE:	DRAWN
A	REDRAWN IN SOLIDWORKS	22JUL09	GJM
B	UPDATE GEN NOTES & B.O.M.	28SEP11	PPC



DECK CUT OUT

- 3. FINISH: 125 RMS MAX.
- 2. BREAK SHARP EDGES AND DEBURR.
- 1. MATERIAL: XXXXXXXXXXXALUMINUM

NOTES: UNLESS OTHERWISE SPECIFIED.

**CUSTOMER APPROVAL**

Signature: \_\_\_\_\_  
 Date: \_\_\_\_\_

IMPORTANT! THIS DRAWING SUPERSEDES ALL OTHER DOCUMENTS. By signing this approval you accept and agree that the dimensions and details shown are correct and properly fit your application, regardless of any differences between this drawing and any contract specifications. Should you see any errors in the drawing, or have any questions, please contact your Freeman Marine sales engineer for clarification.

REV.	DESCRIPTION	DATE	DRAWN
A	REDRAWN IN SOLIDWORKS	22JUL09	GJM
B	UPDATE GEN NOTES & B.O.M.	28SEP11	PPC

SPECIFICATIONS SUBJECT TO CHANGE WITHOUT NOTICE.

PROJECTION

UNLESS OTHERWISE SPECIFIED DIMENSIONS ARE IN INCHES. TOLERANCES FOR ROUGH AND CLEAR OPENINGS: .125 INCH. ALL OTHERS ARE:  
 .X .XX .XXX ANGLES  
 ±.1 ±.03 ±.010 ±2°

DO NOT SCALE DRAWING

 <small>CONFIDENTIAL PROPERTY OF FREEMAN MARINE EQUIPMENT, INC. UNLESS OTHERWISE SPECIFIED, ALL RIGHTS RESERVED. THIS DRAWING IS THE PROPERTY OF FREEMAN MARINE EQUIPMENT, INC. AND SHALL BE RETURNED UPON REQUEST.</small> <small>© ALL RIGHTS RESERVED 2012, FREEMAN MARINE EQUIPMENT, INC.</small>		28336 HUNTER CREEK ROAD GOLD BEACH, OR 97444 U.S.A. PHONE: 541-247-7078 FAX: 541-247-2114 www.freemanmarine.com	
		CLIENT:	FREEMAN MARINE
DRAWN: G MACEACHERN CHECKED: _____ ENGR: _____ DESIGN ACTIVITY: _____ CONTRACT NO.: _____	DATE: 22JUL09 DATE: _____ DATE: _____	TITLE:	HATCH: 1824-H K, ALUMINUM COVER, ALUMINUM RING
SIZE: <b>D</b>	CAGE CODE: 64747	DRAWING NUMBER: 2461-0002	REV. <b>B</b>
SCALE: 1:1.75	CALC. WT.	ACT. WT.	SHEET 3 OF 3