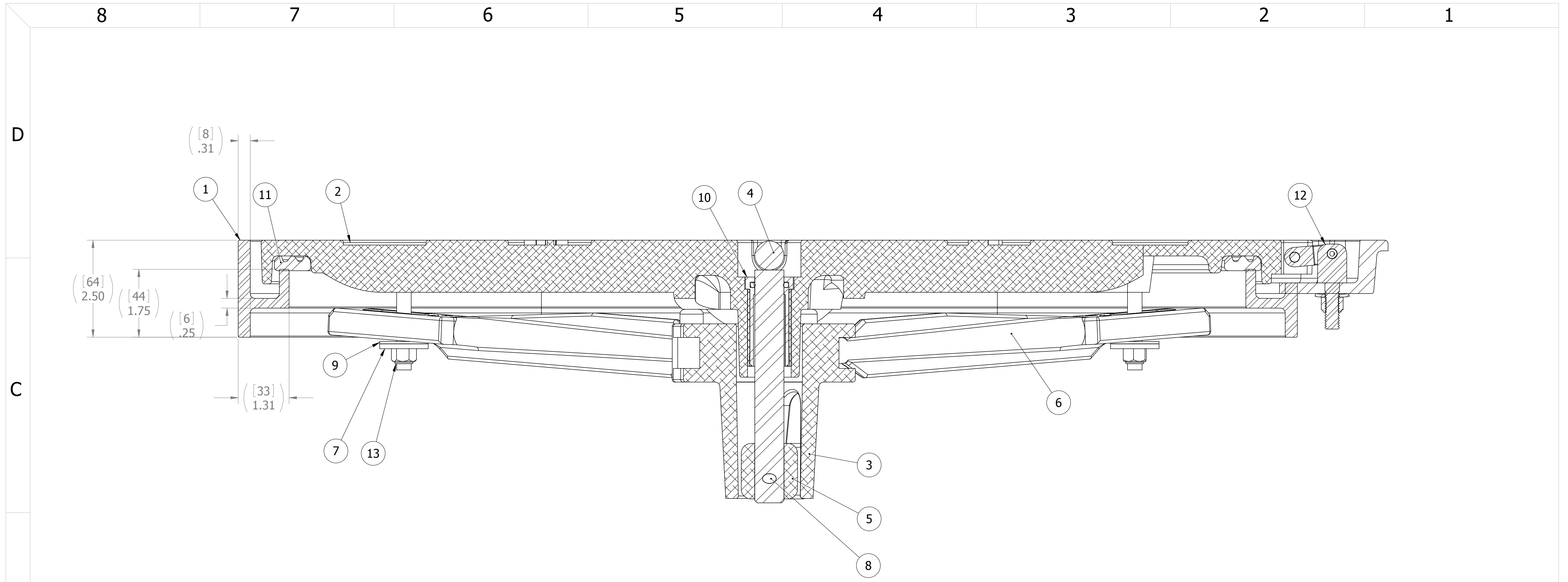


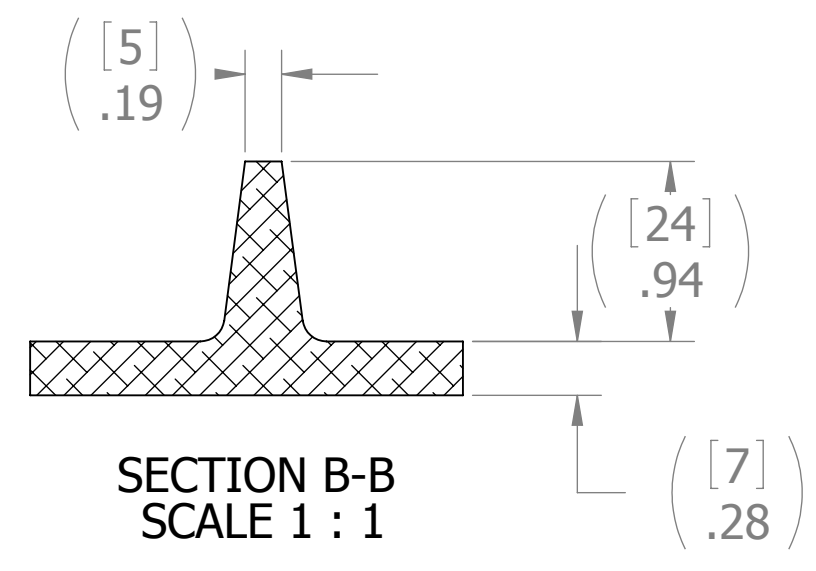
- 10. FOR SPECIFIC INFORMATION CONTACT SALES.
- 9. COMPLETE ASSEMBLY WEIGHT W/ DECK RING, 64.4LBS/ 29.2K.
- 8. DOGGING PRESSURE FULLY ADJUSTABLE.
- 7. HANDLE POSITION TOPSIDE INDICATES WHETHER DOGGING MECHANISM IS IN OPEN OR CLOSED POSITION.
- 6. ALUMINUM ALLOY MECHANISM SHOWN.
- 5. FLUSH, WATERTIGHT CONSTRUCTION.
- 4. INTEGRAL TOPSIDE "T" HANDLE STANDARD, OTHER TOPSIDE ACTUATION AVAILABLE.
- 3. MILD STEEL COAMING FOR WELD IN DECK APPLICATIONS.
- 2. QUICK-ACTING, MECHANISM ENGAGES OR DISENGAGES IN QUARTER-TURN OF CENTER SPINDLE.
- 1. 24.7" X 24.7" CLEAR OPENING, ALL DIMENSIONS SHOWN SUBJECT TO CASTING VARIATION AND ARE REFERENCE ONLY.

NOTES: UNLESS OTHERWISE SPECIFIED.

SPECIFICATIONS SUBJECT TO CHANGE WITHOUT NOTICE.			FREEMAN MARINE EQUIPMENT, INC. 28336 HUNTER CREEK ROAD GOLD BEACH, OR 97444 U.S.A. PHONE: 541-247-7078 FAX: 541-247-2114 www.freemanmarine.com	
PROJECTION			CLIENT: FREEMAN MARINE	
UNLESS OTHERWISE SPECIFIED DIMENSIONS ARE IN INCHES, TOLERANCES FOR ROUGH AND CLEAR OPENING ± .125 INCH. ALL OTHERS ARE:			TITLE: 24" X 24" SQUARE HINGED "K" STYLE ALUMINUM CAST HATCH, MILD STEEL DECK RING W/ INTEGRAL TOPSIDE HANDLE	
.X .XX .XXX ANGLES ±.1 ±.03 ±.010 ±2°			SIZE: D CAGE CODE: 64747 DRAWING NUMBER: 2464-0003 REV. C	
DO NOT SCALE DRAWING			SCALE: 1:3 CALC. WT. ACT. WT. SHEET 1 OF 3	
INITIAL RELEASE A AUTOCAD REVISION B REDRAWN IN SOLIDWORKS, REMOVED ESCAPE HANDLE C UPDATE GEN. NOTES & B.O.M.	19MAY98 19MAY98 17AUG09 13OCT11	DMM DMM PPC PPC	DRAWN: P. CANCELLIERI CHECKED: DATE: ENGR: DATE: DESIGN ACTIVITY: DATE: CONTRACT NO.:	DATE: 18AUG09 DATE: DATE: DATE:



SECTION A-A



SECTION B-B
SCALE 1 : 1

ITEM NO.	QTY.	PART NUMBER	DESCRIPTION	MATERIAL
13	4	0411-2032	NUT .375IN NYLOCK	316/316L
12	2	0461-2205	HINGE ASSY, DOUBLE-ACTING, CAST HATCH,2	REF S/A - B.O.M.
11	1	9885-2002	GASKET, 2424 (7.33' OF 0631-9885)	NEOPRENE
10	1	0031-2058	BUSHING ASSY, W/O-RING, NO SLEEVE	ACETRON/RUBBER
9	4	0413-2005	WASHER, .406 X 1.250 X .062 NYLON	NYLON
8	1	0411-2004	PIN KNURLED .25 X 2.25IN SS 316	SS, 316
7	4	0411-2033	WASHER .406 X 1.25 X .125IN SS 316	SS, 316
6	4	0211-2013	DOG, LOCKING ARM	ALUMINUM, 535.2-F
5	1	0112-2001	ACTUATOR, AL	ALUMINUM, 535
4	1	0021-2005	HANDLE, S/S, ROUND BAR	SS, 316
3	1	0011-2002	HUB, AL, 4 HOLE	AL, 535.2-F
2	1	2464-3001	CASTING, HATCH COVER, 2424 H-K	ALUMINUM, A356.0-F
1	1	2464-1003	COAMING	MILD STEEL

REV.	DESCRIPTION:	DATE:	DRAWN:
	INITIAL RELEASE	19MAY98	DMM
A	AUTOCAD REVISION	19MAY98	DMM
B	REDRAWN IN SOLIDWORKS, REMOVED ESCAPE HANDLE	17AUG09	PPC
C	UPDATE GEN. NOTES & B.O.M.	13OCT11	PPC

SPECIFICATIONS SUBJECT TO CHANGE WITHOUT NOTICE.

PROJECTION

UNLESS OTHERWISE SPECIFIED DIMENSIONS ARE IN INCHES, TOLERANCES FOR ROUGH AND CLEAR OPENING ± .125 INCH. ALL OTHERS ARE:

.X	.XX	.XXX	ANGLES
±.1	±.03	±.010	±2°

DO NOT SCALE DRAWING

FREEMAN MARINE EQUIPMENT, INC.

28336 HUNTER CREEK ROAD
GOLD BEACH, OR 97444 U.S.A.
PHONE: 541-247-7078 FAX: 541-247-2114
www.freemanmarine.com

CLIENT: **FREEMAN MARINE**

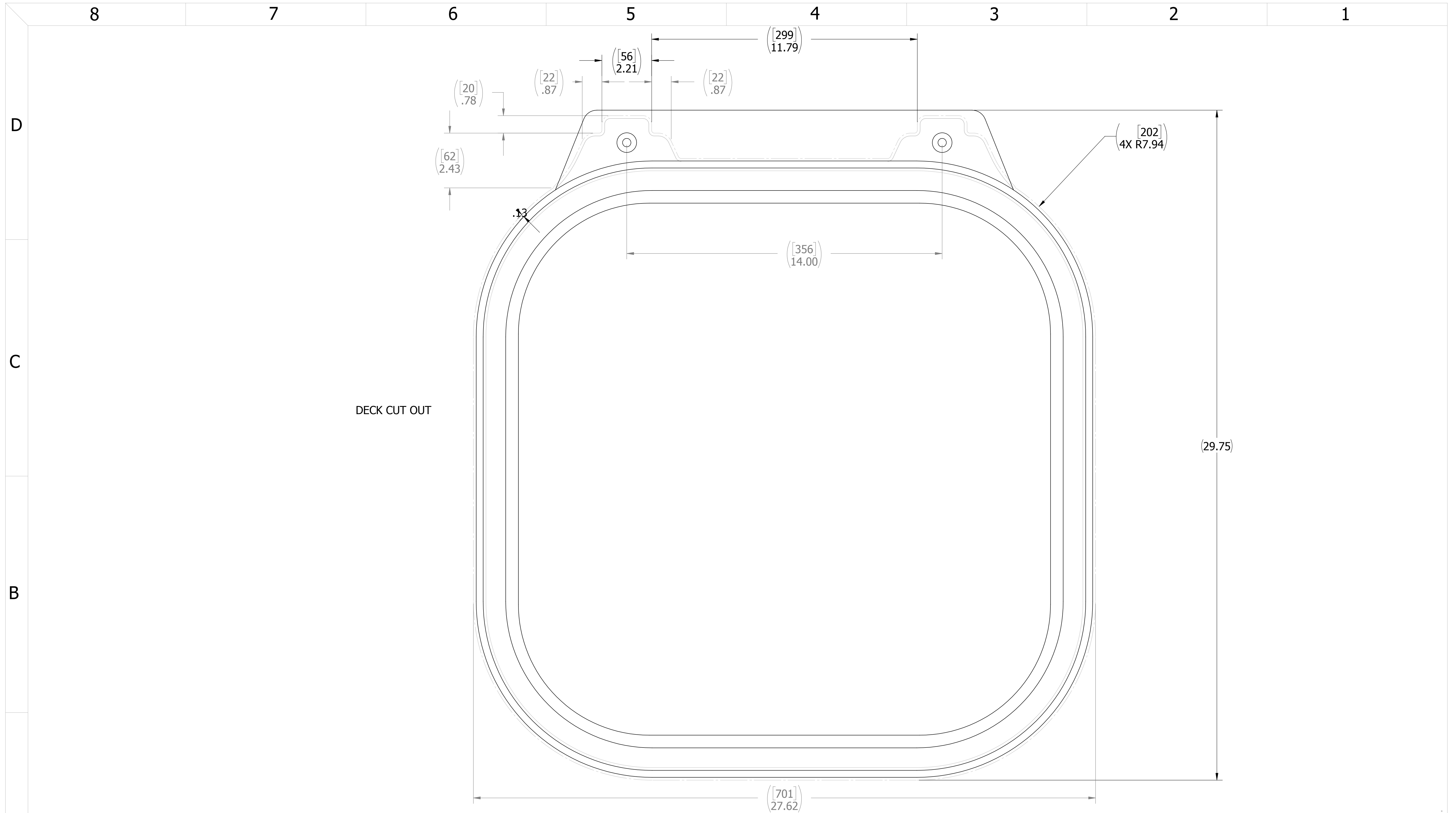
TITLE: **24" X 24" SQUARE HINGED "K" STYLE ALUMINUM CAST HATCH, MILD STEEL DECK RING W/ INTEGRAL TOPSIDE HANDLE**

SIZE: **D** CAGE CODE: **64747** DRAWING NUMBER: **2464-0003** REV. **C**

SCALE: 1:1.25 CALC WT. ACT. WT. SHEET 2 OF 3

CONFIDENTIAL PROPERTY OF FREEMAN MARINE EQUIPMENT INC. UNAUTHORIZED USE, COPYING OR DISTRIBUTION IS STRICTLY PROHIBITED. POSSESSOR OF THIS DOCUMENT AGREES TO THE FOREGOING AND SHALL RETURN THIS DOCUMENT UPON REQUEST. © ALL RIGHTS RESERVED 2004

DRAWN: P. CANCELLIERI DATE: 18AUG09
CHECKED: DATE:
ENGR: DATE:
DESIGN ACTIVITY: DATE:
CONTRACT NO.:



A

B

C

D

- 3. FINISH: 125 RMS MAX.
 - 2. BREAK SHARP EDGES AND DEBURR.
 - 1. MATERIAL: REF. S/A - B.O.M.
- NOTES: UNLESS OTHERWISE SPECIFIED.

CUSTOMER APPROVAL

Signature: _____
 Date: _____

IMPORTANT! THIS DRAWING SUPERSEDES ALL OTHER DOCUMENTS. By signing this approval you accept and agree that the dimensions and details shown are correct and properly fit your application, regardless of any differences between this drawing and any contract specifications. Should you see any errors in the drawing, or have any questions, please contact your Freeman Marine sales engineer for clarification.

REV.	DESCRIPTION:	DATE:	DRAWN
-	INITIAL RELEASE	19MAY98	DMM
A	AUTOCAD REVISION	19MAY98	DMM
B	REDRAWN IN SOLIDWORKS, REMOVED ESCAPE HANDLE	17AUG09	PPC
C	UPDATE GEN. NOTES & B.O.M.	13OCT11	PPC

SPECIFICATIONS SUBJECT TO CHANGE WITHOUT NOTICE.

PROJECTION

UNLESS OTHERWISE SPECIFIED DIMENSIONS ARE IN INCHES, TOLERANCES FOR ROUGH AND CLEAR OPENING ± .125 INCH. ALL OTHERS ARE:

.X	.XX	.XXX	ANGLES
±.1	±.03	±.010	±2°

DO NOT SCALE DRAWING

FREEMAN MARINE EQUIPMENT, INC.

CONFIDENTIAL PROPERTY OF FREEMAN MARINE EQUIPMENT, INC. UNAUTHORIZED USE, REPRODUCTION OR DISTRIBUTION IS STRICTLY PROHIBITED. ALL CODES REMAIN THE PROPERTY OF FREEMAN MARINE EQUIPMENT, INC. AND MUST BE RETURNED UPON REQUEST. © ALL RIGHTS RESERVED 2012, FREEMAN MARINE EQUIPMENT, INC.

28336 HUNTER CREEK ROAD
 GOLD BEACH, OR 97444 U.S.A.
 PHONE: 541-247-7078 FAX: 541-247-2114
 www.freemanmarine.com

CLIENT: **FREEMAN MARINE**

TITLE: **24" X 24" SQUARE HINGED "K" STYLE ALUMINUM CAST HATCH, MILD STEEL DECK RING**

SIZE: **D** CAGE CODE: **64747** DRAWING NUMBER: **2464-0003** REV. **C**

SCALE: 1:2 CALC. WT. ACT. WT. SHEET 3 OF 3