

- 10. FOR SPECIFIC INFORMATION CONTACT SALES.
- 9. COMPLETE ASSEMBLY WEIGHT W/ DECK RING, 60.7LBS/ 27.5K.
- 8. DOGGING PRESSURE FULLY ADJUSTABLE.
- 7. HANDLE POSITION TOPSIDE INDICATES WHETHER DOGGING MECHANISM IS IN OPEN OR CLOSED POSITION.
- 6. ALUMINUM ALLOY MECHANISM SHOWN.
- 5. FLUSH, WATERTIGHT CONSTRUCTION.
- 4. INTEGRAL TOPSIDE "T" HANDLE STANDARD, OTHER TOPSIDE ACTUATION AVAILABLE.
- 3. STEEL COAMING, WELDED INSTALLATIONS.
- 2. QUICK-ACTING, MECHANISM ENGAGES OR DISENGAGES IN QUARTER-TURN OF CENTER SPINDLE.
- 1. 19.4" x 26.2" CLEAR OPENING, ALL DIMENSIONS SHOWN SUBJECT TO CASTING VARIATION AND ARE REFERENCE ONLY.

NOTES: UNLESS OTHERWISE SPECIFIED.

CUSTOMER APPROVAL

Signature: _____

Date: _____

IMPORTANT! THIS DRAWING SUPERSEDES ALL OTHER DOCUMENTS. By signing this approval you accept and agree that the dimensions and details shown are correct and properly fit your application, regardless of any differences between this drawing and any contract specifications. Should you see any errors in the drawing, or have any questions, please contact your Freeman Marine sales engineer for clarification.

REV.	DESCRIPTION	DATE	DRAWN
-	INITIAL RELEASE	03OCT96	MWF
A	UPDATED TO SOLIDWORKS	13SEP10	RR
B	UPDATE GEN. NOTES & B.O.M.	15NOV11	PPC

SPECIFICATIONS SUBJECT TO CHANGE WITHOUT NOTICE.

PROJECTION

UNLESS OTHERWISE SPECIFIED DIMENSIONS ARE IN INCHES. TOLERANCES FOR ROUGH AND CLEAR OPENING: .125 INCH. ALL OTHERS ARE:

.X .XX .XXX ANGLES
±.1 ±.03 ±.010 ±2°

DO NOT SCALE DRAWING

FREEMAN MARINE EQUIPMENT, INC.

28336 HUNTER CREEK ROAD
GOLD BEACH, OR 97444 U.S.A.
PHONE: 541-247-7078 FAX: 541-247-2114
www.freemanmarine.com

CLIENT: FREEMAN MARINE EQUIPMENT

TITLE: 19" X 26" OVAL "K" STYLE ALUMINUM CAST HATCH, MILD STEEL DECK RING

SIZE	CAGE CODE	DRAWING NUMBER	REV.
D	64747	2475-0003	B

SCALE: 1:2.5 CALC. WT. ACT. WT. SHEET 1 OF 3

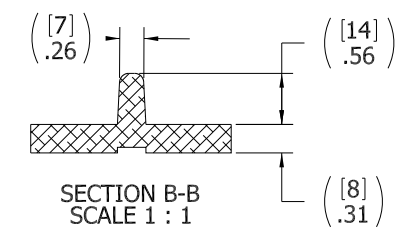
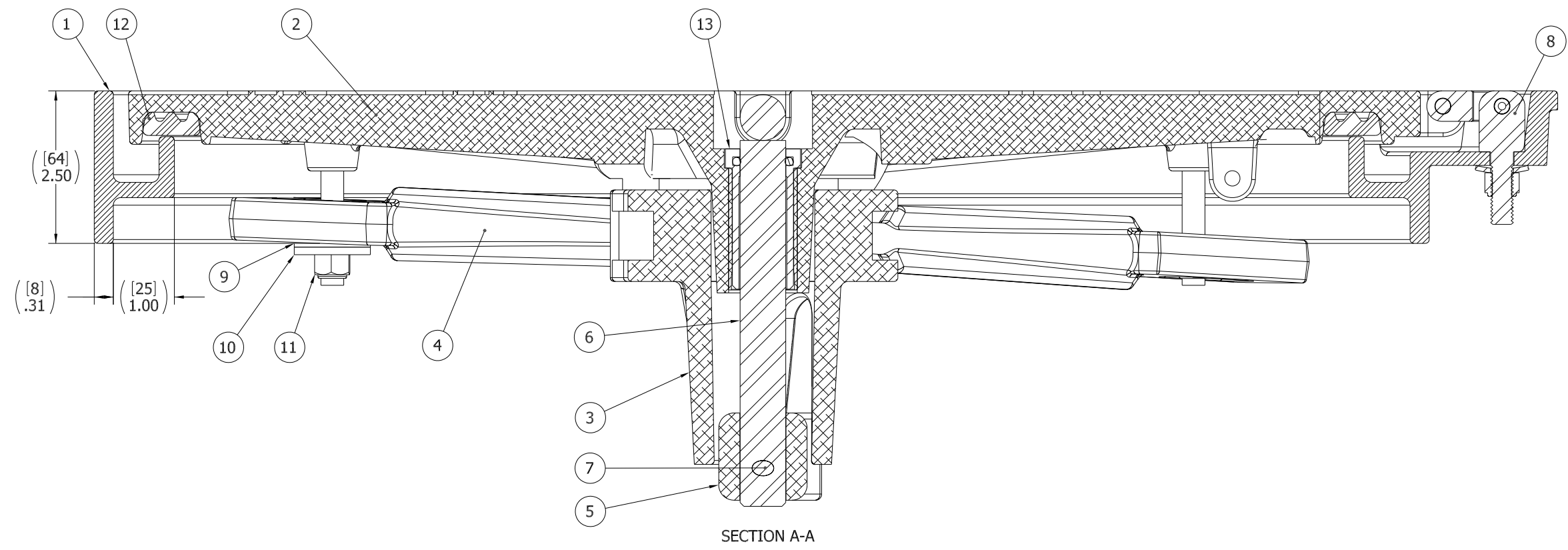
8 7 6 5 4 3 2 1

D

C

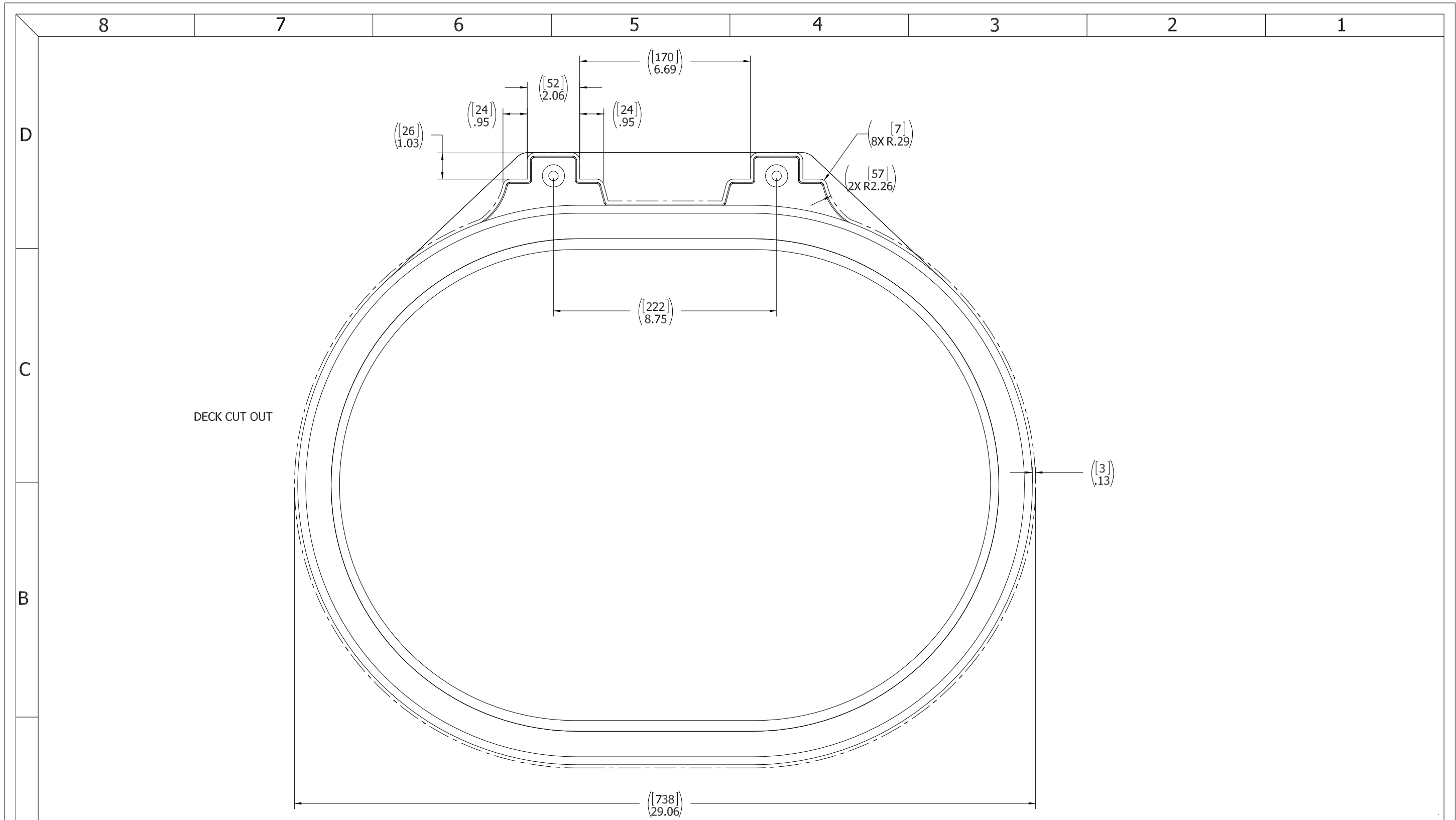
B

A



ITEM NO.	QTY.	PART NUMBER	DESCRIPTION	MATERIAL
14	1	0441-2006	O-RING, 3/4 ID X 1 OD X 1/8 WD	BUNA
13	1	0441-2009	BUSHING, DELRIN: FLUTED HATCH	ACETRON GP
12	1	9885-2012	GASKET	NEOPRENE, 25 DURO
11	4	0411-2032	NUT .375IN-16 SS 316 NYLOCK	SS 316/316L
10	4	0411-2033	WASHER .406 X 1.25 X .125IN SS 316	SS 316/316L
9	4	0413-2005	WASHER, .406 X 1.250 X .062 NYLON	NYLON
8	2	0461-2205	HINGE ASSY, DOUBLE-ACTING, CAST HATCH,2	REF S/A - B.O.M.
7	1	0411-2004	PIN KNURLED .25 X 2.25IN SS 316	SS 316/316L
6	1	0021-2005	HANDLE, S/S, ROUND BAR	STAINLESS STEEL, 316
5	1	0112-2001	ACTUATOR, AL	ALUMINUM, 535
4	4	0211-2007	DOG, LOCKING ARM	ALUMINUM, 535.2-F
3	1	0011-2002	HUB, AL, 4 HOLE	ALUMINUM, 535.2-F
2	1	2475-3001	COVER: 1926K	ALUMINUM, 356.0-F
1	1	2475-1003	RING, 19 x 26 HINGED	MILD STEEL

SPECIFICATIONS SUBJECT TO CHANGE WITHOUT NOTICE.		FREEMAN MARINE EQUIPMENT, INC. 28336 HUNTER CREEK ROAD GOLD BEACH, OR 97444 U.S.A. PHONE: 541-247-7078 FAX: 541-247-2114 www.freemanmarine.com	
PROJECTION		CLIENT: FREEMAN MARINE EQUIPMENT	
UNLESS OTHERWISE SPECIFIED DIMENSIONS ARE IN INCHES. TOLERANCES FOR ROUGH AND CLEAR OPENINGS: .125 INCH. ALL OTHERS ARE: .X .XX .XXX ANGLES ±.1 ±.03 ±.010 ±2° DO NOT SCALE DRAWING		TITLE: 19" X 26" OVAL "K" STYLE ALUMINUM CAST HATCH, MILD STEEL DECK RING	
- INITIAL RELEASE 03OCT96 MWF A UPDATED TO SOLIDWORKS 13SEP10 RR B UPDATE GEN. NOTES & B.O.M. 15NOV11 PPC	DATE: DRAWN	DRAWN: M.W.F. DATE: 03OCT96 CHECKED: DATE: ENGR: DATE: DESIGN ACTIVITY: DATE: CONTRACT NO.:	SIZE: D CAGE CODE: 64747 DRAWING NUMBER: 2475-0003 SCALE: 1:1 CALC. WT. ACT. WT. SHEET 2 OF 3



- 3. FINISH: 125 RMS MAX.
- 2. BREAK SHARP EDGES AND DEBURR.
- 1. MATERIAL: REF. S/A - B.O.M.

NOTES: UNLESS OTHERWISE SPECIFIED.

CUSTOMER APPROVAL

Signature: _____
 Date: _____

IMPORTANT! THIS DRAWING SUPERSEDES ALL OTHER DOCUMENTS. By signing this approval you accept and agree that the dimensions and details shown are correct and properly fit your application, regardless of any differences between this drawing and any contract specifications. Should you see any errors in the drawing, or have any questions, please contact your Freeman Marine sales engineer for clarification.

REV.	DESCRIPTION:	DATE:	DRAWN
-	INITIAL RELEASE	03OCT96	MWF
A	UPDATED TO SOLIDWORKS	13SEP10	RR
B	UPDATE GEN. NOTES & B.O.M.	15NOV11	PPC

SPECIFICATIONS SUBJECT TO CHANGE WITHOUT NOTICE.

PROJECTION

UNLESS OTHERWISE SPECIFIED DIMENSIONS ARE IN INCHES. TOLERANCES FOR ROUGH AND CLEAR OPENING: .125 INCH. ALL OTHERS ARE:
 .X .XX .XXX ANGLES
 ±.1 ±.03 ±.010 ±2°

DO NOT SCALE DRAWING

FREEMAN MARINE EQUIPMENT, INC.		28336 HUNTER CREEK ROAD GOLD BEACH, OR 97444 U.S.A. PHONE: 541-247-7078 FAX: 541-247-2114 www.freemanmarine.com	
		CONFIDENTIAL PROPERTY OF FREEMAN MARINE EQUIPMENT, INC. REPRODUCTION OR DISTRIBUTION OF THIS DRAWING WITHOUT THE WRITTEN PERMISSION OF FREEMAN MARINE EQUIPMENT, INC. IS STRICTLY PROHIBITED. © ALL RIGHTS RESERVED 2012, FREEMAN MARINE EQUIPMENT, INC.	
CLIENT: FREEMAN MARINE EQUIPMENT		TITLE: 19" X 26" OVAL "K" STYLE ALUMINUM CAST HATCH, MILD STEEL DECK RING	
DRAWN: M.W.F.	DATE: 03OCT96	SIZE: D	CAGE CODE: 64747
CHECKED:	DATE:	DRAWING NUMBER: 2475-0003	REV. B
ENGR:	DATE:	SCALE: 1:1.75	CALC. WT. ACT. WT.
DESIGN ACTIVITY:	DATE:	SHEET 3 OF 3	
CONTRACT NO.:			