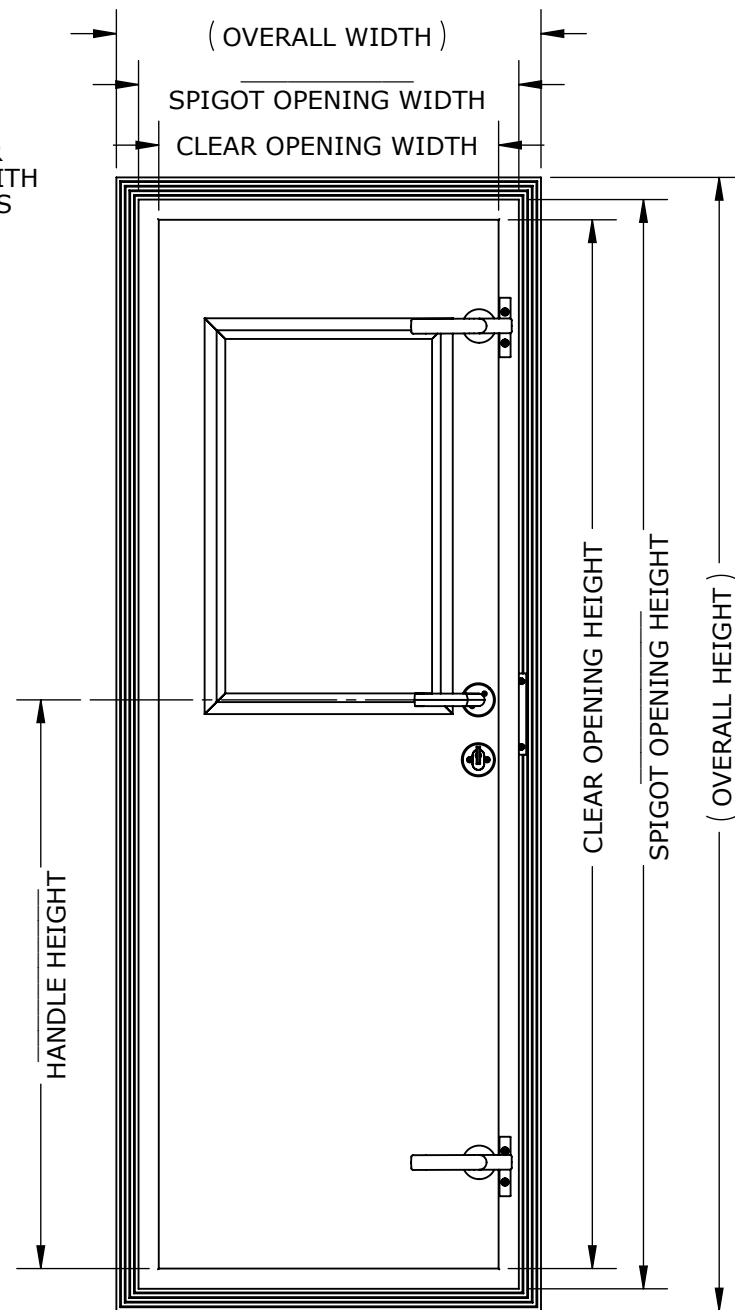
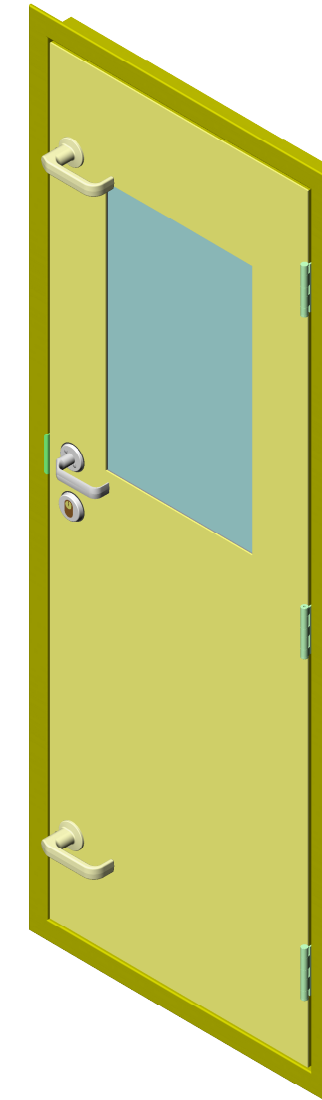


EXTERIOR VIEW

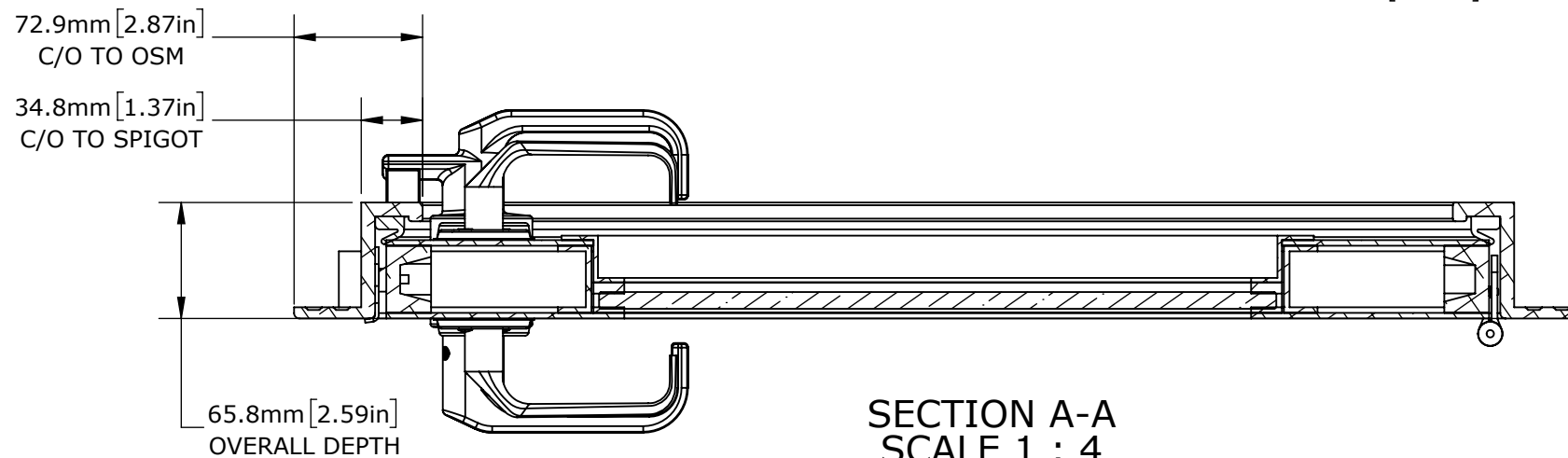


INTERIOR VIEW

$OVERALL = SPIGOT\ OPENING + 76.2mm[3.00in]$
 $CLEAR\ OPENING = SPIGOT\ OPENING - 69.6mm[2.74\ in]$
 $PLATE\ CUT = SPIGOT\ OPENING + 6.35mm[0.25in]$

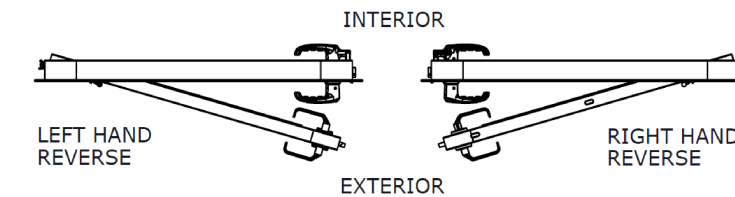
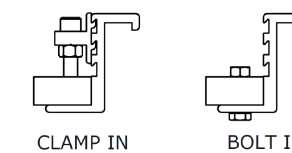


ISOMETRIC VIEW
SCALE 1 : 12



SECTION A-A
SCALE 1 : 4

FRAME STYLES



| OPTIONS | |
|-----------------------|--------------------|
| HANDING | RIGHT HANDED |
| | LEFT HANDED |
| LOCK | LOCKING |
| | NOT LOCKING |
| LOCK MECHANISM | LOCKSET/HANDLE |
| | LOCKSET/DEADBOLT |
| | PASSAGE SET/HANDLE |
| DOG STYLE | ALUMINIUM |
| | CONCEALED |
| | NYLON |
| WINDOW STYLE | STAINLESS STEEL |
| | FULL HEIGHT |
| | HALF HEIGHT |
| FRAME STYLE | CIRCULAR |
| | NO PORTLIGHT |
| *CORNER TYPE | BOLT IN |
| | CLAMP IN |
| *CORNER TYPE | MITRED |
| | ROUND |

| | |
|--|--|
| CUSTOMER | |
| ADVANTEC | |
| PROJECT | |
| 1223 PCM SALES DRAWING | |
| DESCRIPTION | |
| STANDARD 1223 PCM SERIES MODEL AND DRAWING | |

| | |
|----------------|-----------|
| CONTACT | DATE |
| (604) 607-0091 | 9/30/2020 |



| | |
|---|-----------|
| DWG TITLE | CAGE CODE |
| 1223 SERIES DOOR | |
| DESCRIPTION | QTY |
| Premium Duty, Formed Panel, Steel/Stainless Steel, Weathertight | |

COPYRIGHT 2020 ADVANTEC GLOBAL INNOVATIONS. ALL RIGHTS RESERVED. CONFIDENTIAL PROPERTY OF ADVANTEC GLOBAL INNOVATIONS. UNAUTHORIZED USE, REPRODUCTION OR DISTRIBUTION IS STRICTLY PROHIBITED. COPIES REMAIN THE PROPERTY OF ADVANTEC GLOBAL INNOVATIONS AND MUST BE RETURNED UPON REQUEST.

| | | | | | |
|---------|------------------|-----------|---------|------|------|
| SCALE | DRAWN | DATE | CHECKED | DATE | SIZE |
| 1:13 | SP | 9/30/2020 | | | B |
| S.O. NO | DWG NO | SHEET | REV | | |
| | 1223-1 PCM SALES | 1 of 1 | 00 | | |