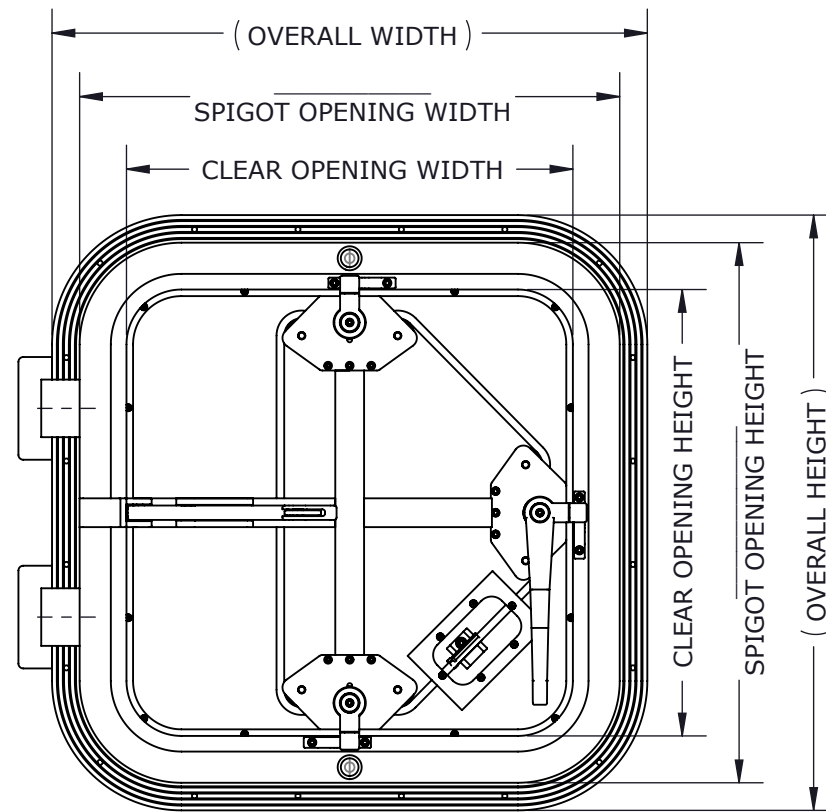
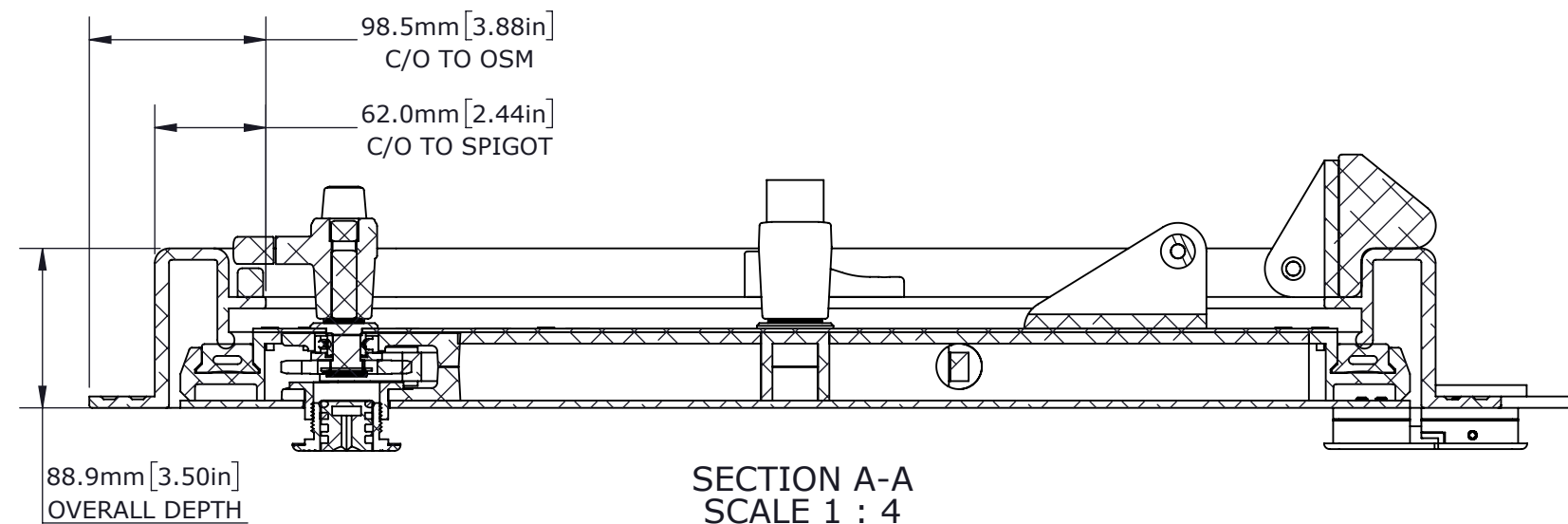
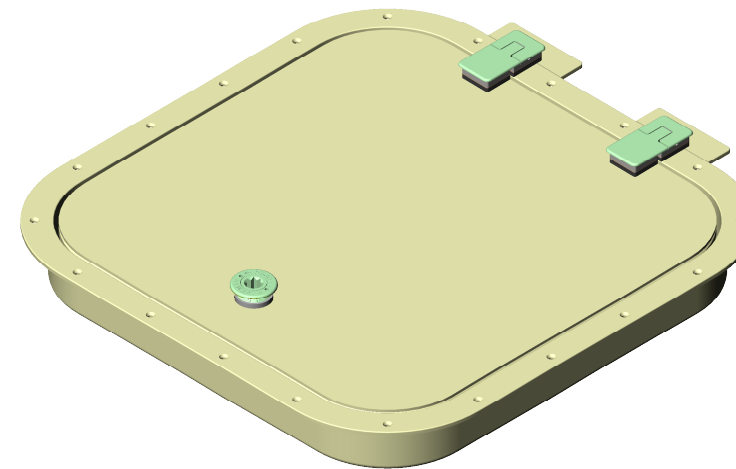


**EXTERIOR VIEW**

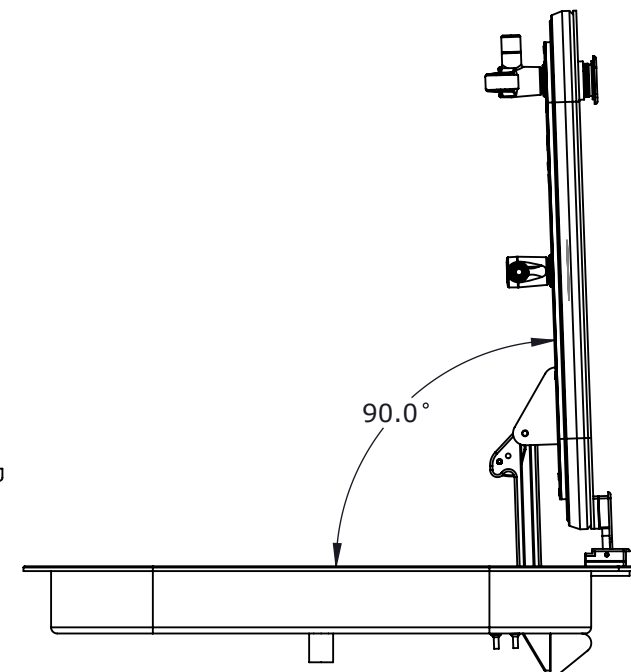


**INTERIOR VIEW**

OVERALL = SPIGOT OPENING + 73.2mm[2.88in]  
 CLEAR OPENING = SPIGOT OPENING - 124.0mm[4.88in]  
 PLATE CUT = SPIGOT OPENING + 6.35mm[0.25in]



**SECTION A-A**  
SCALE 1 : 4



**SIDE VIEW**

**OPTIONS**

<b>HANDLE STYLE</b>	HAND WHEEL	
	REMOVABLE WINCH HANDLE	
	LEVER	
<b>FRAME STYLE</b>	BI-SQUARE	
	BOLT-IN	
	WELD-IN	

**CUSTOMER**

ADVANTEC

**PROJECT**

3440 FREEMAN SALES DRAWING

**DESCRIPTION**

STANDARD 3440 FREEMAN SERIES MODEL AND DRAWING

CONTACT (604) 607-0091 DATE 10/8/2020



DWG TITLE 3440 SERIES HATCH CAGE CODE

DESCRIPTION Heavy Duty, Single Leaf, Quick-Acting QTY

COPYRIGHT 2020 ADVANTEC GLOBAL INNOVATIONS. ALL RIGHTS RESERVED. CONFIDENTIAL PROPERTY OF ADVANTEC GLOBAL INNOVATIONS. UNAUTHORIZED USE, REPRODUCTION OR DISTRIBUTION IS STRICTLY PROHIBITED. COPIES REMAIN THE PROPERTY OF ADVANTEC GLOBAL INNOVATIONS AND MUST BE RETURNED UPON REQUEST.

SCALE 1:10	DRAWN SP	DATE 10/8/2020	CHECKED	DATE	SIZE B
S.O. NO	DWG NO 3440-1 FME Sales	SHEET 1 of 1	REV	00	