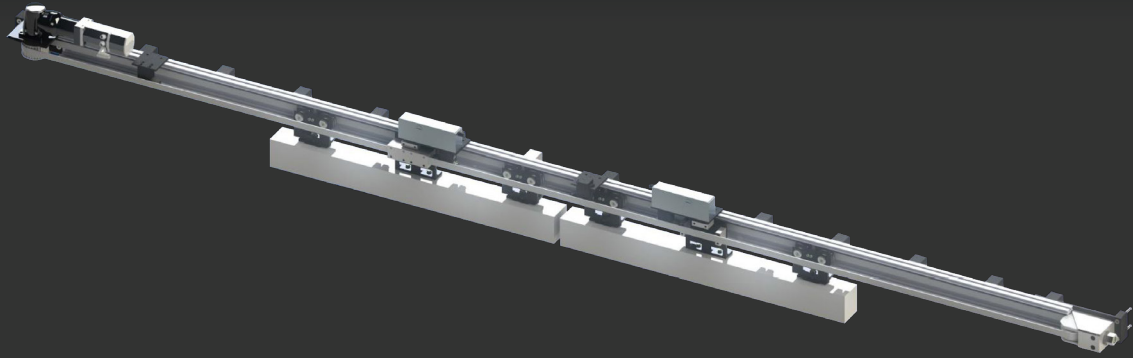


Whisper Drive

Powered Sliding Door System



Designed for single or multi-panel sliding doors, the smooth function and elegant user interface will please even the most discerning tastes in modern yacht design. Programmable pre-set functions enable ease of use while ensuring absolute safety and security whether at port or at sea.

The whisper drive system has been tested and built to handle heavy lists and adverse sea conditions without fail. The streamlined design makes service and maintenance simple and our global support network is there when you need it.

Features

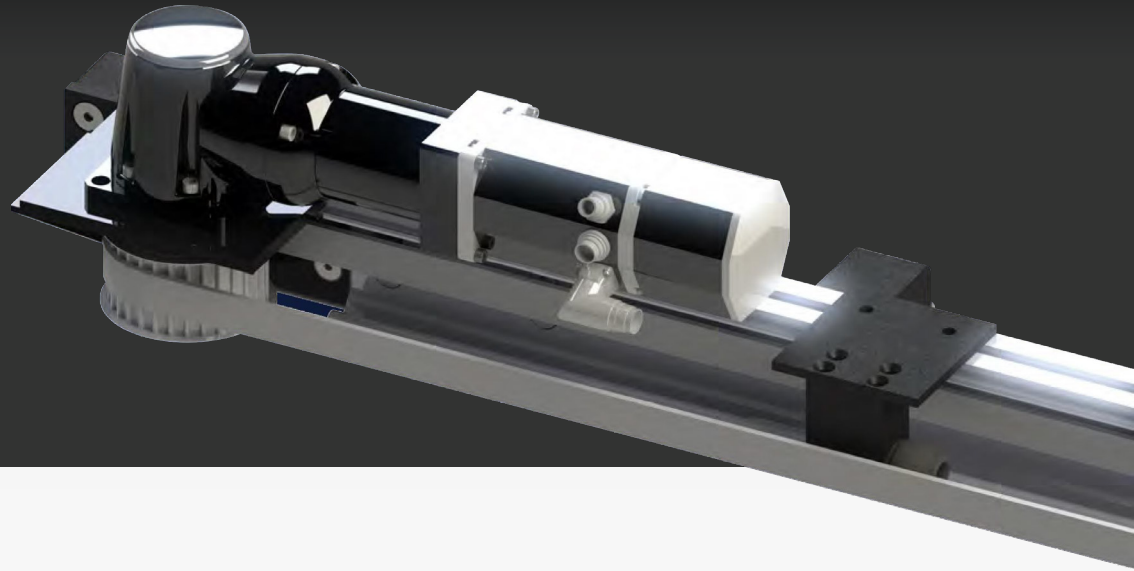
- ✓ **Push Buttons:** Interior & Exterior Piezo Led (1-set)
- ✓ **Touch Screen:** Interior Only (1-set)
- ✓ **Eye Beam:** Safety Sensors (2-sets)
- ✓ **Hardware:** Motor with integrated break (1-unit)
- ✓ **Control Box Size:**
420mm W x 356mm L x 165mm H
- ✓ **Junction Box Size:**
140mm W x 343mm L x 140mm H
- ✓ **Max Distance:**
 - Junction box to motor: 10m
 - Junction box to control box: 10m

Specification

- ✓ **Regulatory:** Used for Class or Non-Classified Vessels
- ✓ **Capacity (per door panel):**
Up to 500lbs (35:1 gear reduction)
- ✓ **Drive Type:** Belt Driven
- ✓ **Proximity:** Used for bridge indication
- ✓ **Security:** Pin Lock

Whisper Drive

Powered Sliding Door System



Specification

Preset Modes

- ✓ Locked Mode
- ✓ Sea Mode
- ✓ Port Mode
- ✓ Full Open Mode
- ✓ Half Open Mode

Safety Options

- ✓ Eye Beams (Standard)
- ✓ Ultra Sonic
- ✓ Pinch Eye Beam
- ✓ Edge Strip

Adjustment Settings

- ✓ Door Open Amount
- ✓ Door Speed
- ✓ Hold Open Time
- ✓ Button & Sensor Modes

Warranty

- ✓ 2 Year Manufacturer's Warranty