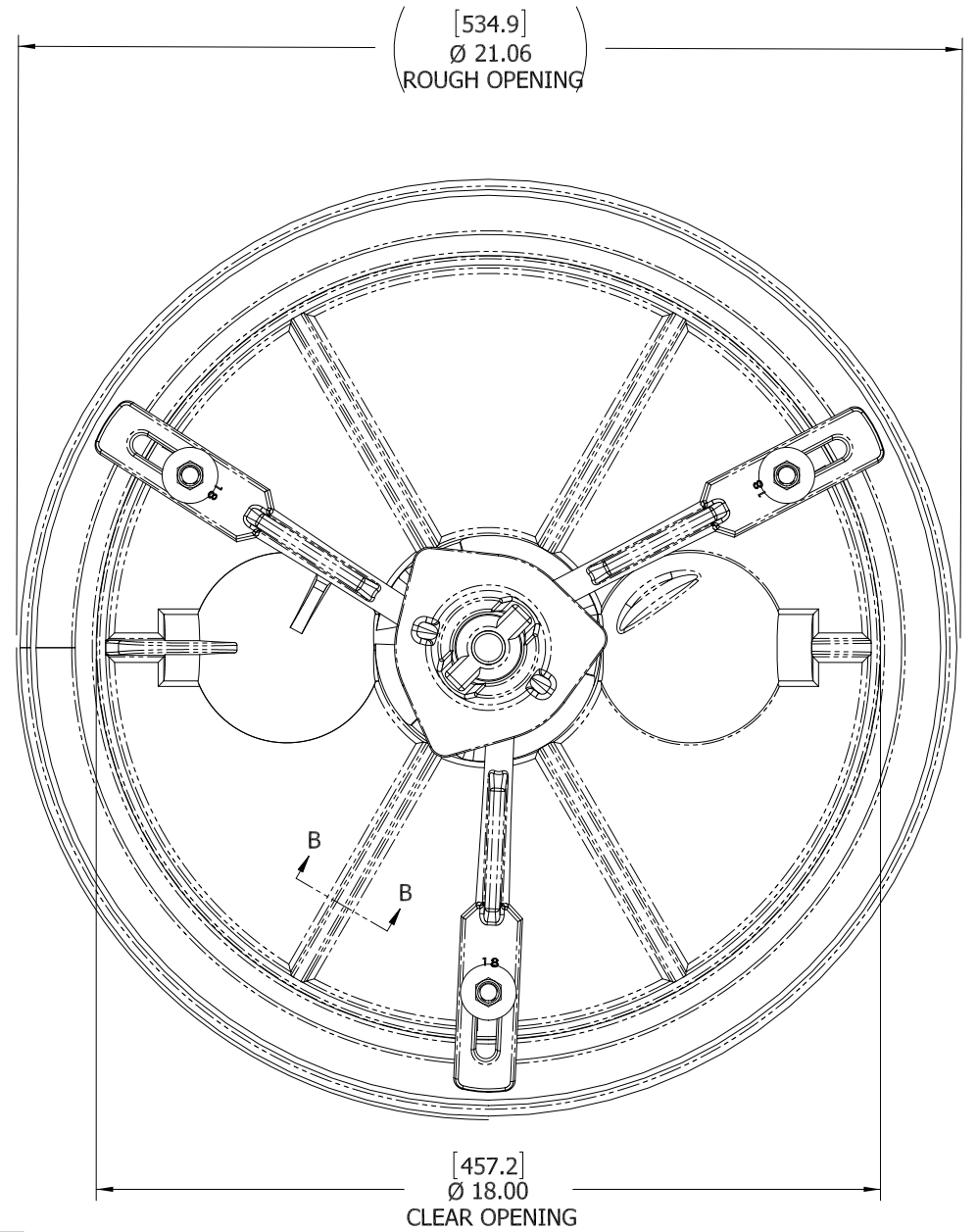
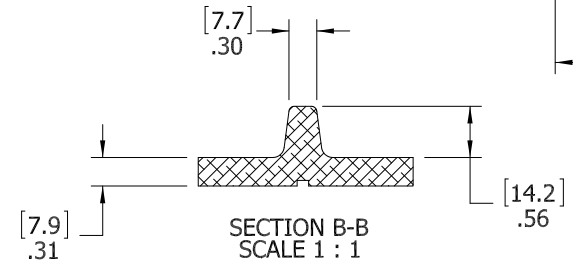
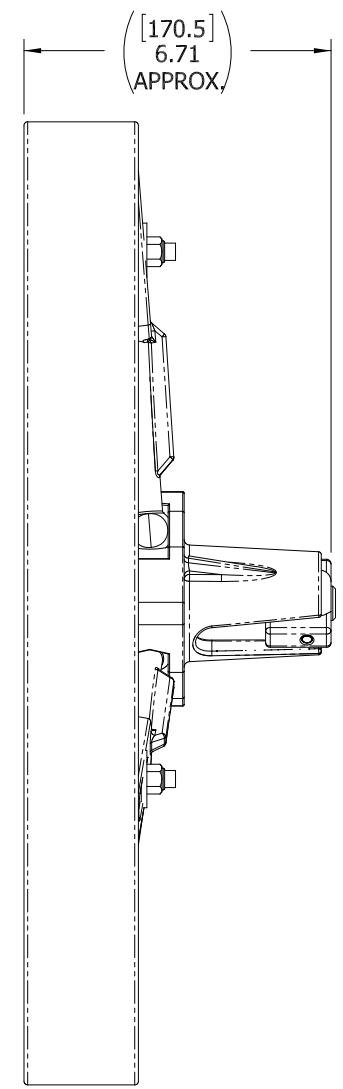
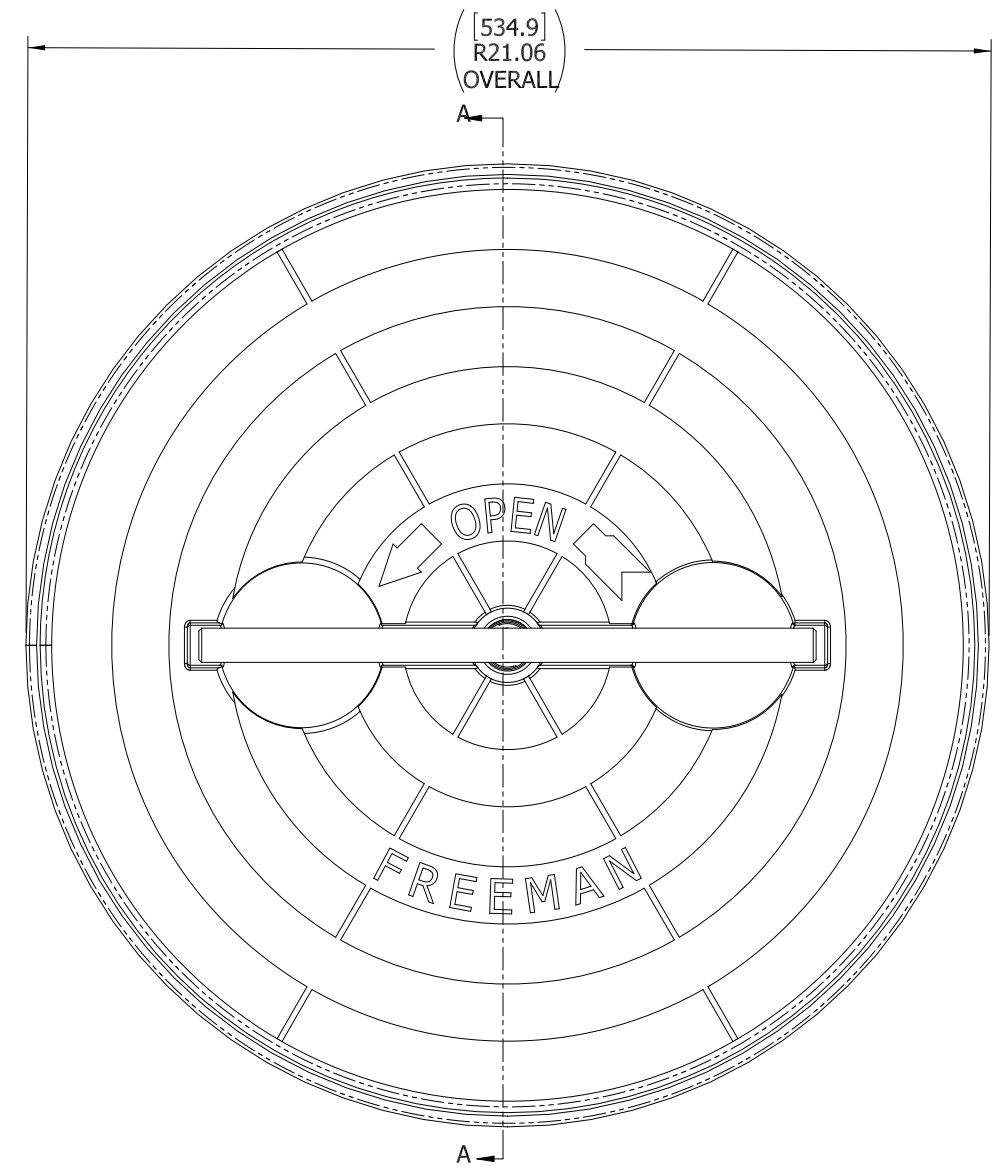


8 7 6 5 4 3 2 1

D
C
B
A



- 10. FOR SPECIFIC INFORMATION CONTACT SALES.
- 9. COMPLETE ASSEMBLY WEIGHT
- 8. DOGGING PRESSURE FULLY ADJUSTABLE.
- 7. HANDLE POSITION TOPSIDE INDICATES WHETHER DOGGING MECHANISM IS IN OPEN OR CLOSED POSITION.
- 6. ALUMINUM ALLOY MECHANISM SHOWN.
- 5. FLUSH, WATERTIGHT CONSTRUCTION.
- 4. INTEGRAL TOPSIDE "T" HANDLE STANDARD, OTHER TOPSIDE ACTUATION AVAILABLE.
- 3. CAST ALUMINUM COVER, MILD STEEL COAMING.
- 2. QUICK-ACTING, MECHANISM ENGAGES OR DISENGAGES IN QUARTER-TURN OF CENTER SPINDLE.
- 1. 24.0"/ 610MM DIAMETER CLEAR OPENING, ALL DIMENSIONS SHOWN SUBJECT TO CASTING VARIATION AND ARE REFERENCE ONLY.

NOTES: UNLESS OTHERWISE SPECIFIED.

CUSTOMER APPROVAL
 Signature: _____
 Date: _____
 IMPORTANT! THIS DRAWING SUPERSEDES ALL OTHER DOCUMENTS. By signing this approval you accept and agree that the dimensions and details shown are correct and properly fit your application, regardless of any differences between this drawing and any contract specifications. Should you see any errors in the drawing, or have any questions, please contact your Freeman Marine sales engineer for clarification.

SPECIFICATIONS SUBJECT TO CHANGE WITHOUT NOTICE.			
PROJECTION			
UNLESS OTHERWISE SPECIFIED DIMENSIONS ARE IN INCHES. TOLERANCES FOR ROUGH AND CLEAR OPENINGS: .125 INCH. ALL OTHERS ARE:			
.X	.XX	.XXX	ANGLES
±.1	±.03	±.010	±2°
DO NOT SCALE DRAWING			
REV.	DESCRIPTION:	DATE:	DRAWN:
A	PRODUCTION RELEASE	19MAY13	ZIC

FREEMAN MARINE EQUIPMENT, INC.
 28336 HUNTER CREEK ROAD
 GOLD BEACH, OR 97444 U.S.A.
 PHONE: 541-247-7078 FAX: 541-247-2114
 www.freemanmarine.com

CLIENT: **FREEMAN MARINE**
 TITLE: **HATCH: 18K, AL COVER, MS RING**

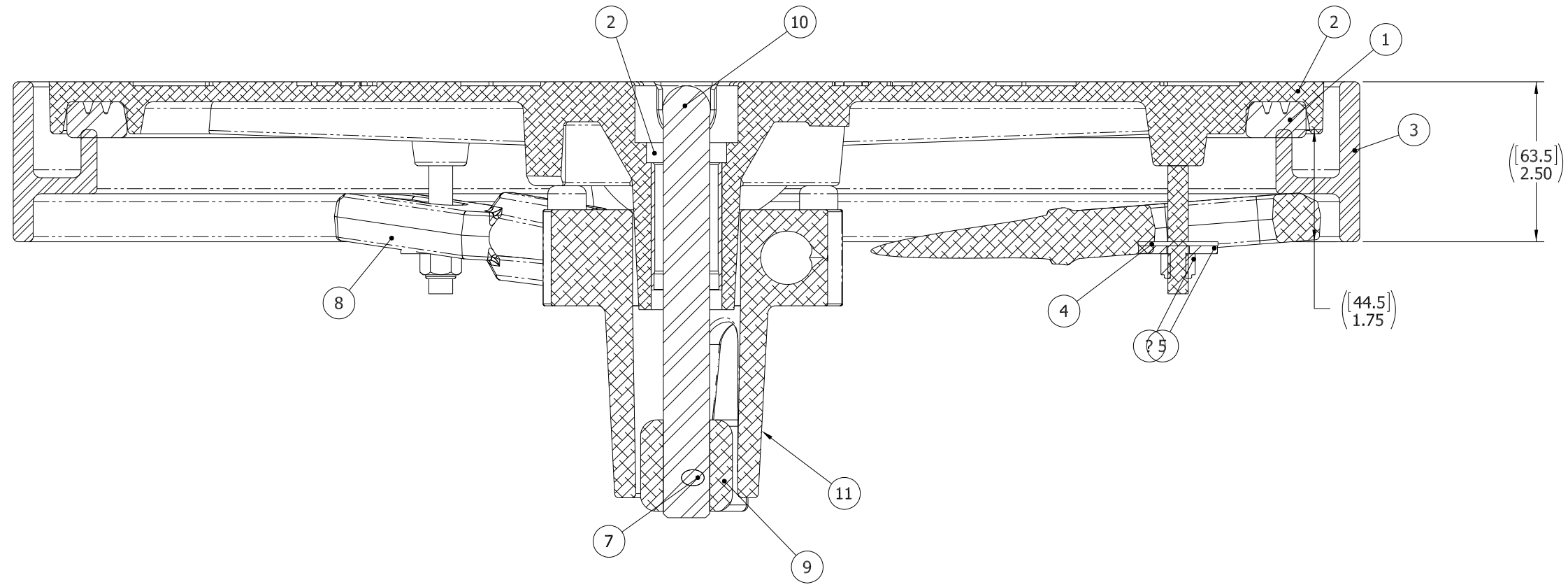
CONFIDENTIAL PROPERTY OF FREEMAN MARINE EQUIPMENT, INC. UNLESS OTHERWISE SPECIFIED. ALL RIGHTS RESERVED 2012. FREEMAN MARINE EQUIPMENT, INC.

DRAWN: Z. CARPENTER	DATE: 19MAY13
CHECKED: D. YOES	DATE: 19MAY13
ENGR:	DATE:
DESIGN ACTIVITY:	DATE:
CONTRACT NO.:	

SIZE: D	CAGE CODE: 64747	DRAWING NUMBER: 2405-0003	REV. A
SCALE: 1:4	CALC. WT.	ACT. WT.	SHEET 1 OF 3

8 7 6 5 4 3 2 1

D
C
B
A



SECTION A-A
SCALE 1 : 1

ITEM NO.	QTY.	PART NUMBER	DESCRIPTION	MATERIAL
11	1	0011-2001	HUB, 3 HOLE	ALUMINUM, 535.2-F
10	1	0021-2005	HANDLE, S/S, ROUND BAR	STAINLESS STEEL, 316
9	1	0112-2001	ACTUATOR, AL	ALUMINUM, 535
8	3	0211-2005	DOG, LOCKING ARM	ALUMINUM, 535.2-F
7	1	0411-2004	PIN KNURLED .25 X 2.25IN SS 316	SS 316/316L
6	3	0411-2032	NUT .375IN-16 SS 316 NYLOCK	SS 316/316L
5	3	0411-2033	WASHER .406 X 1.25 X .125IN SS 316	SS 316/316L
4	3	0413-2005	WASHER, .406 X 1.250 X .062 NYLON	NYLON
3	1	2405-1003	RING: 18K	STEEL, A-36
2	1	2405-3001	COVER: 18K ALUM, FINISHED CASTING	ALUMINUM,
1	1	9813-2020	GASKET: 18K (LIFT-OUT, 4.94 FT 0631-9813)	NEOPRENE

- 3. FINISH: 125 RMS MAX.
- 2. BREAK SHARP EDGES AND DEBURR.
- 1. MATERIAL: REF. S/A - B.O.M.

NOTES: UNLESS OTHERWISE SPECIFIED.

CUSTOMER APPROVAL

Signature: _____

Date: _____

IMPORTANT! THIS DRAWING SUPERSEDES ALL OTHER DOCUMENTS. By signing this approval you accept and agree that the dimensions and details shown are correct and properly fit your application, regardless of any differences between this drawing and any contract specifications. Should you see any errors in the drawing, or have any questions, please contact your Freeman Marine sales engineer for clarification.

REV.	DESCRIPTION	DATE	DRAWN
A	PRODUCTION RELEASE	19MAY13	ZIC

SPECIFICATIONS SUBJECT TO CHANGE WITHOUT NOTICE.

PROJECTION

UNLESS OTHERWISE SPECIFIED DIMENSIONS ARE IN INCHES. TOLERANCES FOR ROUGH AND CLEAR OPENINGS: .125 INCH. ALL OTHERS ARE:

.X	.XX	.XXX	ANGLES
±.1	±.03	±.010	±2°

DO NOT SCALE DRAWING

FREEMAN
MARINE EQUIPMENT, INC.

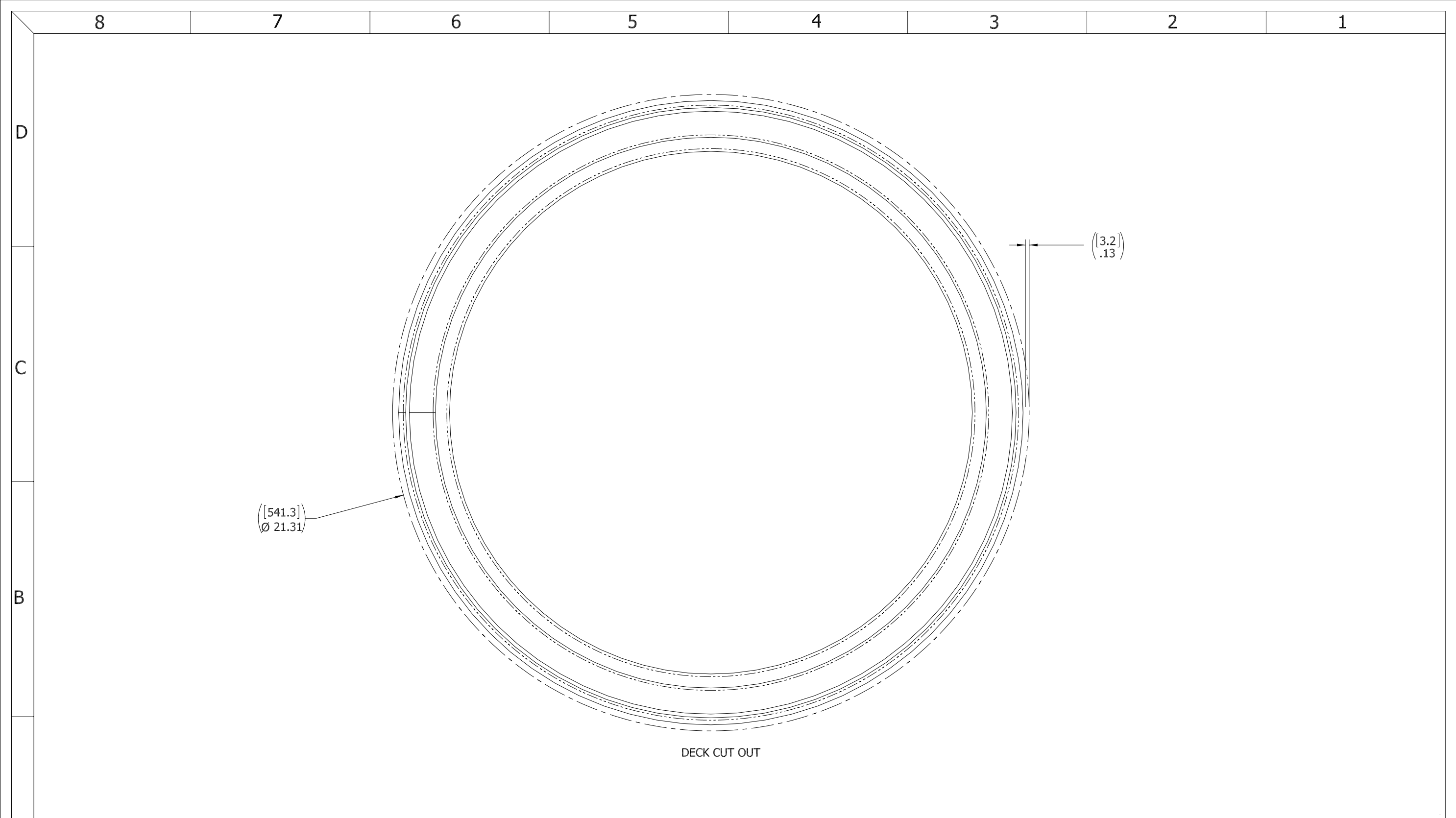
CONFIDENTIAL PROPERTY OF FREEMAN MARINE EQUIPMENT, INC. UNLESS OTHERWISE SPECIFIED. ALL RIGHTS RESERVED. THIS DRAWING IS THE PROPERTY OF FREEMAN MARINE EQUIPMENT, INC. AND IS NOT TO BE REPRODUCED OR COPIED WITHOUT WRITTEN PERMISSION.

28336 HUNTER CREEK ROAD
GOLD BEACH, OR 97444 U.S.A.
PHONE: 541-247-7078 FAX: 541-247-2114
www.freemanmarine.com

CLIENT: **FREEMAN MARINE**

TITLE: **HATCH: 18K, AL COVER, MS RING**

DRAWN: Z. CARPENTER	DATE: 19MAY13	CHECKED: D. YOES	DATE: 19MAY13	ENGR:	DATE:	DESIGN ACTIVITY:	DATE:	CONTRACT NO.:
SIZE: D		CAGE CODE: 64747		DRAWING NUMBER: 2405-0003		REV. A		SCALE: 1:4
CALC. WT.		ACT. WT.		SHEET 2 OF 3				



- 3. FINISH: 125 RMS MAX.
- 2. BREAK SHARP EDGES AND DEBURR.
- 1. MATERIAL: REF. S/A - B.O.M.

NOTES: UNLESS OTHERWISE SPECIFIED.

CUSTOMER APPROVAL

Signature: _____
 Date: _____

IMPORTANT! THIS DRAWING SUPERSEDES ALL OTHER DOCUMENTS. By signing this approval you accept and agree that the dimensions and details shown are correct and properly fit your application, regardless of any differences between this drawing and any contract specifications. Should you see any errors in the drawing, or have any questions, please contact your Freeman Marine sales engineer for clarification.

SPECIFICATIONS SUBJECT TO CHANGE WITHOUT NOTICE.			
PROJECTION			
UNLESS OTHERWISE SPECIFIED DIMENSIONS ARE IN INCHES. TOLERANCES FOR ROUGH AND CLEAR OPENINGS: .125 INCH. ALL OTHERS ARE:			
.X	.XX	.XXX	ANGLES
±.1	±.03	±.010	±2°
DO NOT SCALE DRAWING			
REV.	DESCRIPTION:	DATE:	DRAWN:
A	PRODUCTION RELEASE	19MAY13	ZIC

FREEMAN MARINE EQUIPMENT, INC.		28336 HUNTER CREEK ROAD GOLD BEACH, OR 97444 U.S.A. PHONE: 541-247-7078 FAX: 541-247-2114 www.freemanmarine.com	
CONFIDENTIAL PROPERTY OF FREEMAN MARINE EQUIPMENT, INC. UNLESS OTHERWISE SPECIFIED. ALL RIGHTS RESERVED. THIS DRAWING IS THE PROPERTY OF FREEMAN MARINE EQUIPMENT, INC. AND SHALL BE RETURNED UPON REQUEST.		CLIENT: FREEMAN MARINE	
DRAWN: Z. CARPENTER DATE: 19MAY13		TITLE: HATCH: 18K, AL COVER, MS RING	
CHECKED: D. YOES DATE: 19MAY13		SIZE: D	
ENGR: DATE:		CAGE CODE: 64747	DRAWING NUMBER: 2405-0003
CONTRACT NO.:		SCALE: 1:1.5	ACT. WT. SHEET 3 OF 3
		REV. A	