

8

7

6

5

4

3

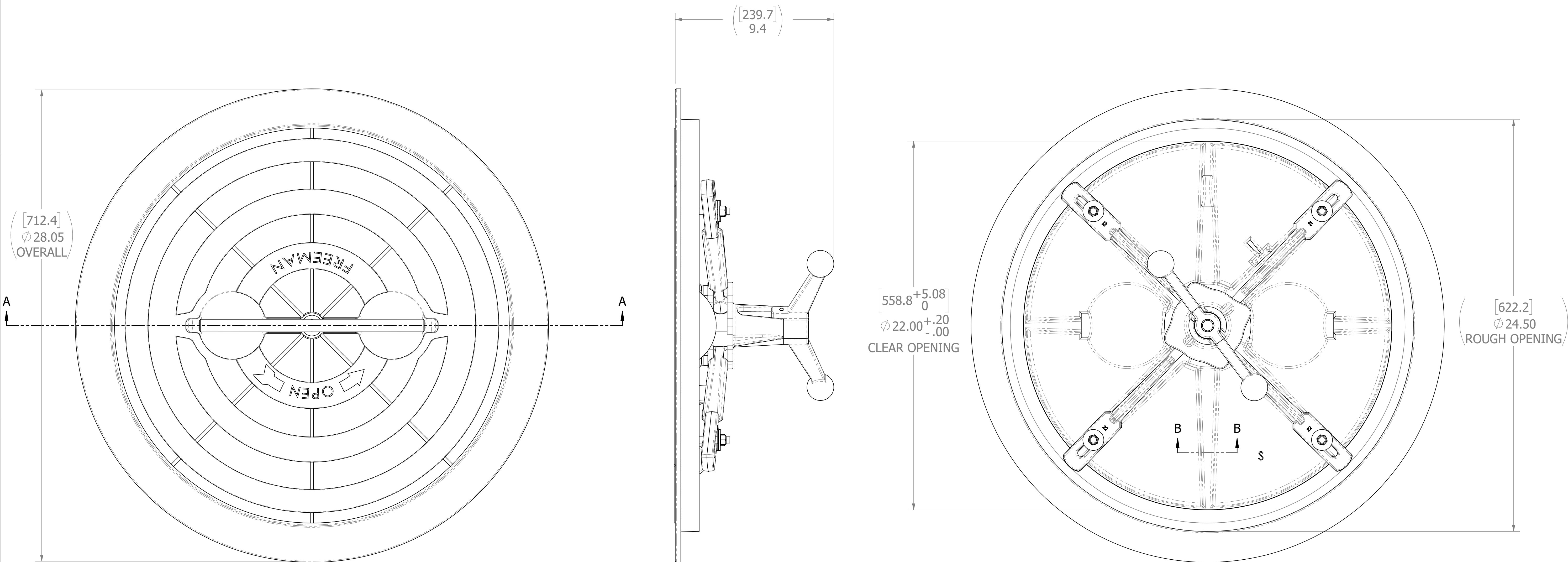
2

1

D

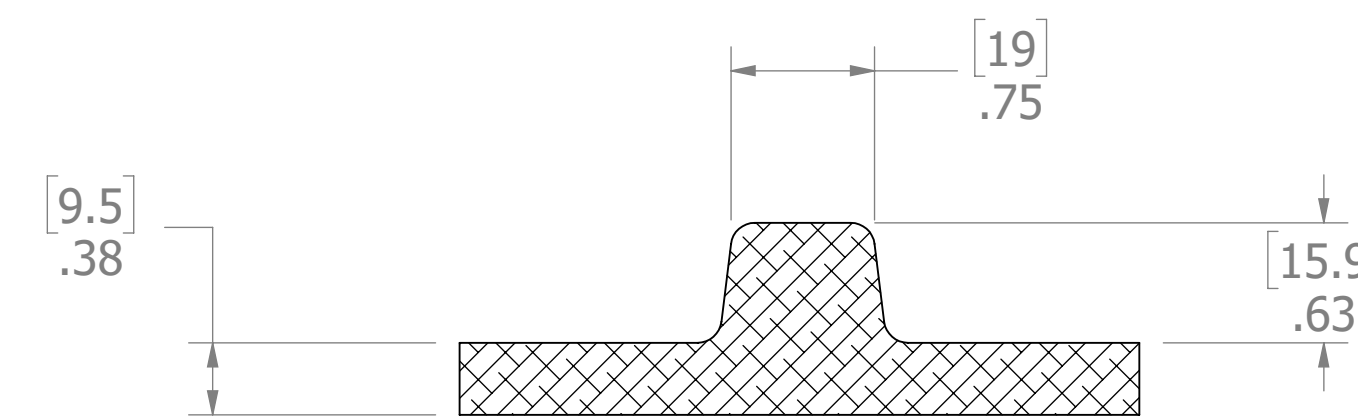
C

B



- 10. FOR SPECIFIC INFORMATION CONTACT SALES.
- 9. COMPLETE ASSEMBLY WEIGHT W/ DECK RING, 50.1LBS
- 8. DOGGING PRESSURE FULLY ADJUSTABLE.
- 7. HANDLE POSITION TOPSIDE INDICATES WHETHER DOGGING MECHANISM IS IN OPEN OR CLOSED POSITION.
- 6. ALUMINUM ALLOY MECHANISM SHOWN.
- 5. FLUSH, WATERTIGHT CONSTRUCTION.
- 4. INTEGRAL TOPSIDE "T" HANDLE STANDARD, OTHER TOPSIDE ACTUATION AVAILABLE.
- 3. CAST ALUMINUM ALLOY FLANGE, FLANGE CAN BE DRILLED FOR BOLTED INSTALLATIONS OR WELDED TO ALUMINUM.
- 2. QUICK-ACTING, MECHANISM ENGAGES OR DISENGAGES IN QUARTER-TURN OF CENTER SPINDLE.
- 1. 22.00"/ 559MM DIAMETER CLEAR OPENING, ALL DIMENSIONS SHOWN SUBJECT TO CASTING VARIATION AND ARE REFERENCE ONLY.

NOTES: UNLESS OTHERWISE SPECIFIED.



SECTION B-B
SCALE 1 : 1

CUSTOMER APPROVAL

Signature: _____

Date: _____

IMPORTANT! THIS DRAWING SUPERCEDES ALL OTHER DOCUMENTS. By signing this approval you accept and agree that the dimensions and details shown are correct and properly fit your application, regardless of any differences between this drawing and any contract specifications. Should you see any errors in the drawing, or have any questions, please contact your Freeman Marine sales engineer for clarification.

REV.	DESCRIPTION:	DATE:	DRAWN
A	PRODUCTION RELEASE	31JAN14	ZJC

SPECIFICATIONS SUBJECT TO CHANGE WITHOUT NOTICE.



UNLESS OTHERWISE SPECIFIED DIMENSIONS ARE IN INCHES, TOLERANCES FOR ROUGH AND CLEAR OPENING $\pm .125$ INCH. ALL OTHERS ARE:

.X .XX .XXX ANGLES

$\pm .1$ $\pm .03$ $\pm .010$ $\pm 2^\circ$

DO NOT SCALE DRAWING

FREEMAN
MARINE EQUIPMENT, INC.

28336 HUNTER CREEK ROAD
GOLD BEACH, OR 97444 U.S.A.
PHONE: 541-247-7078 FAX: 541-247-2114
www.freemanmarine.com

CLIENT: FREEMAN MARINE

TITLE: HATCH 22"
AL COVER, AL RING

SIZE	CAGE CODE	DRAWING NUMBER	REV.
D	64747	2408-0002	A
SCALE: 1:3	CALC. WT.	ACT. WT.	SHEET 1 OF 2

CONTRACT NO.:

DESIGN ACTIVITY:

ENGR: S MILLER

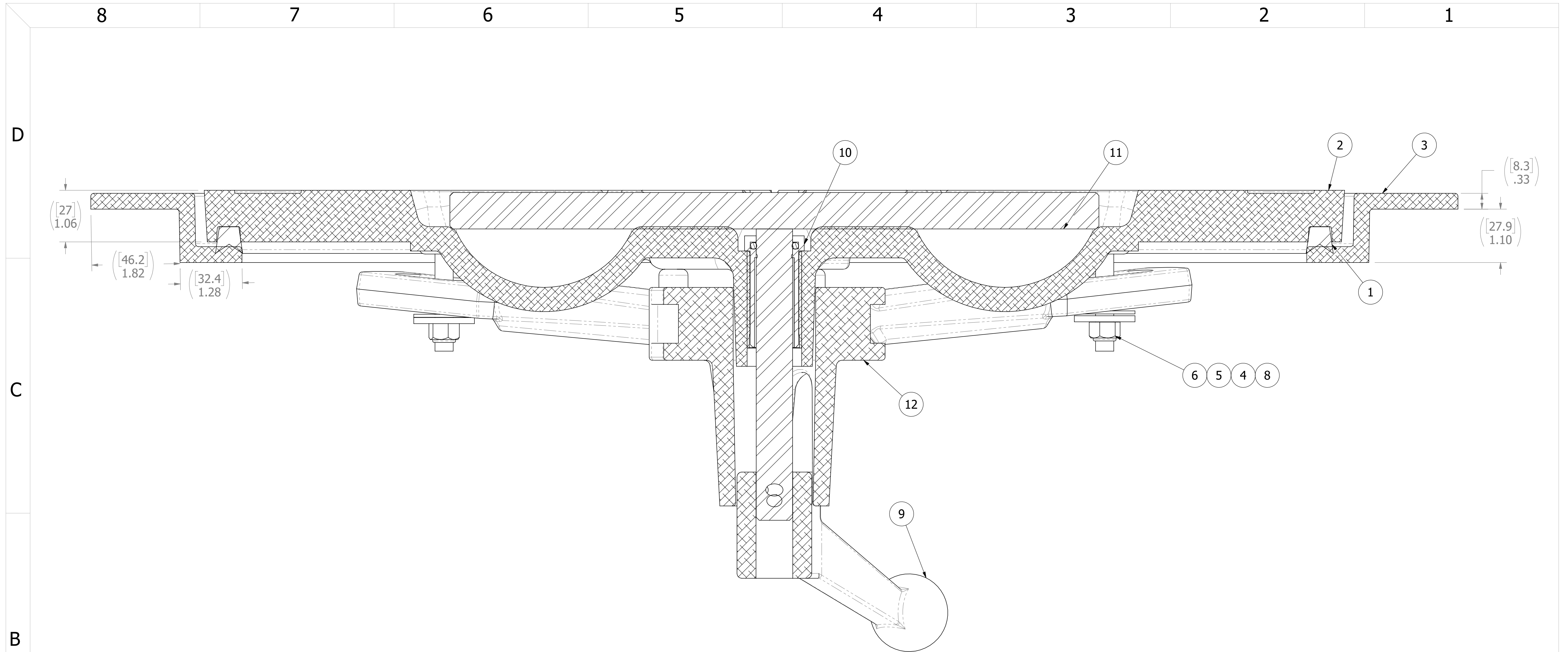
CHECKED: Z CARPENTER

DRAWN: S MILLER

DATE: 31JAN14

DATE: 31JAN14

DATE:



SECTION A-A
SCALE 1 : 1

ITEM NO.	QTY.	PART NUMBER	DESCRIPTION	MATERIAL
12	1	0011-2002	HUB, AL, 4 HOLE	535.2-F
11	1	0021-2050	HANDLE, S/S, ROUND BAR VM VERT GROOVE	
10	1	0031-2058	BUSHING ASSY, W/O-RING NO SLEEVE	REF S.A. BOM
9	1	0112-2003	ESCAPE HANDLE, AL	535.2-F
8	4	0211-2010	DOG, LOCKING ARM 22, AL	535.2-F
7	1	0411-2004	PIN, KNURLED .25 DIA X 2.25IN SS 316	316/316L
6	4	0411-2032	NUT .375IN NYLOCK	316/316L
5	4	0411-2033	WASHER .406 X 1.25 X .125IN SS 316	316/316L
4	4	0413-2005	WASHER, .406X1.25X.062 NYLON	PTFE (general)
3	1	2408-1002	RING: 22 ALUM	356.0-F
2	1	2408-3001	COVER: 22 ALUM, FINISHED CASTING	A356.0-T6
1	1	9801-2008	GASKET:	Rubber

CUSTOMER APPROVAL

Signature: _____
Date: _____

IMPORTANT! THIS DRAWING SUPERSEDES ALL OTHER DOCUMENTS. By signing this approval you accept and agree that the dimensions and details shown are correct and properly fit your application, regardless of any differences between this drawing and any contract specifications. Should you see any errors in the drawing, or have any questions, please contact your Freeman Marine sales engineer for clarification.

REV.	DESCRIPTION	DATE	DRAWN
A	PRODUCTION RELEASE	31JAN14	ZJC

SPECIFICATIONS SUBJECT TO CHANGE WITHOUT NOTICE.

PROJECTION

UNLESS OTHERWISE SPECIFIED DIMENSIONS ARE IN INCHES, TOLERANCES FOR ROUGH AND CLEAR OPENING ± .125 INCH. ALL OTHERS ARE:

.X	.XX	.XXX	ANGLES
±.1	±.03	±.010	±2°

DO NOT SCALE DRAWING

FREEMAN MARINE EQUIPMENT, INC.

28336 HUNTER CREEK ROAD
GOLD BEACH, OR 97444 U.S.A.
PHONE: 541-247-7078 FAX: 541-247-2114
www.freemanmarine.com

CONFIDENTIAL PROPERTY OF FREEMAN MARINE EQUIPMENT, INC. UNAUTHORIZED USE, REPRODUCTION OR DISTRIBUTION IS STRICTLY PROHIBITED. ALL COPIES REMAIN THE PROPERTY OF FREEMAN MARINE EQUIPMENT, INC. AND MUST BE RETURNED UPON REQUEST.

CLIENT: **FREEMAN MARINE**

TITLE: **HATCH 22" AL COVER, AL RING**

SIZE	CAGE CODE	DRAWING NUMBER	REV.
D	64747	2408-0002	A

SCALE: 1:4 CALC. WT. ACT. WT. SHEET 2 OF 2