

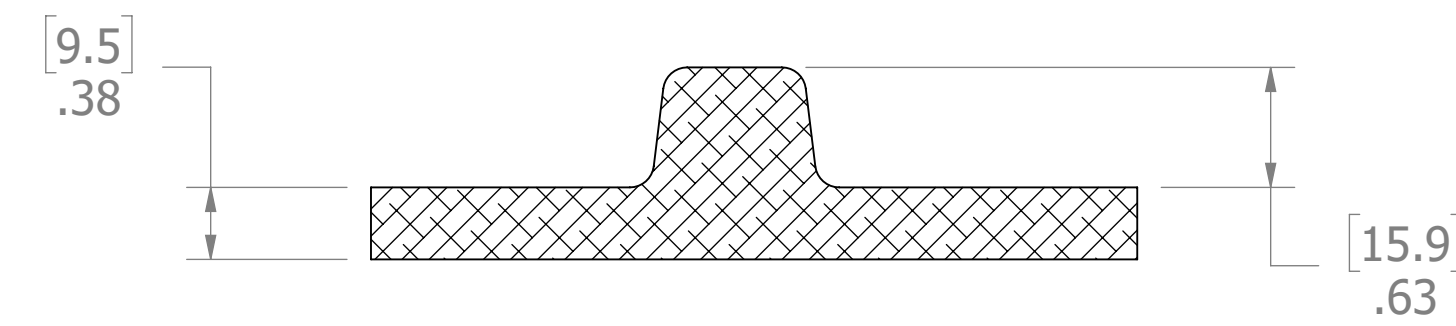
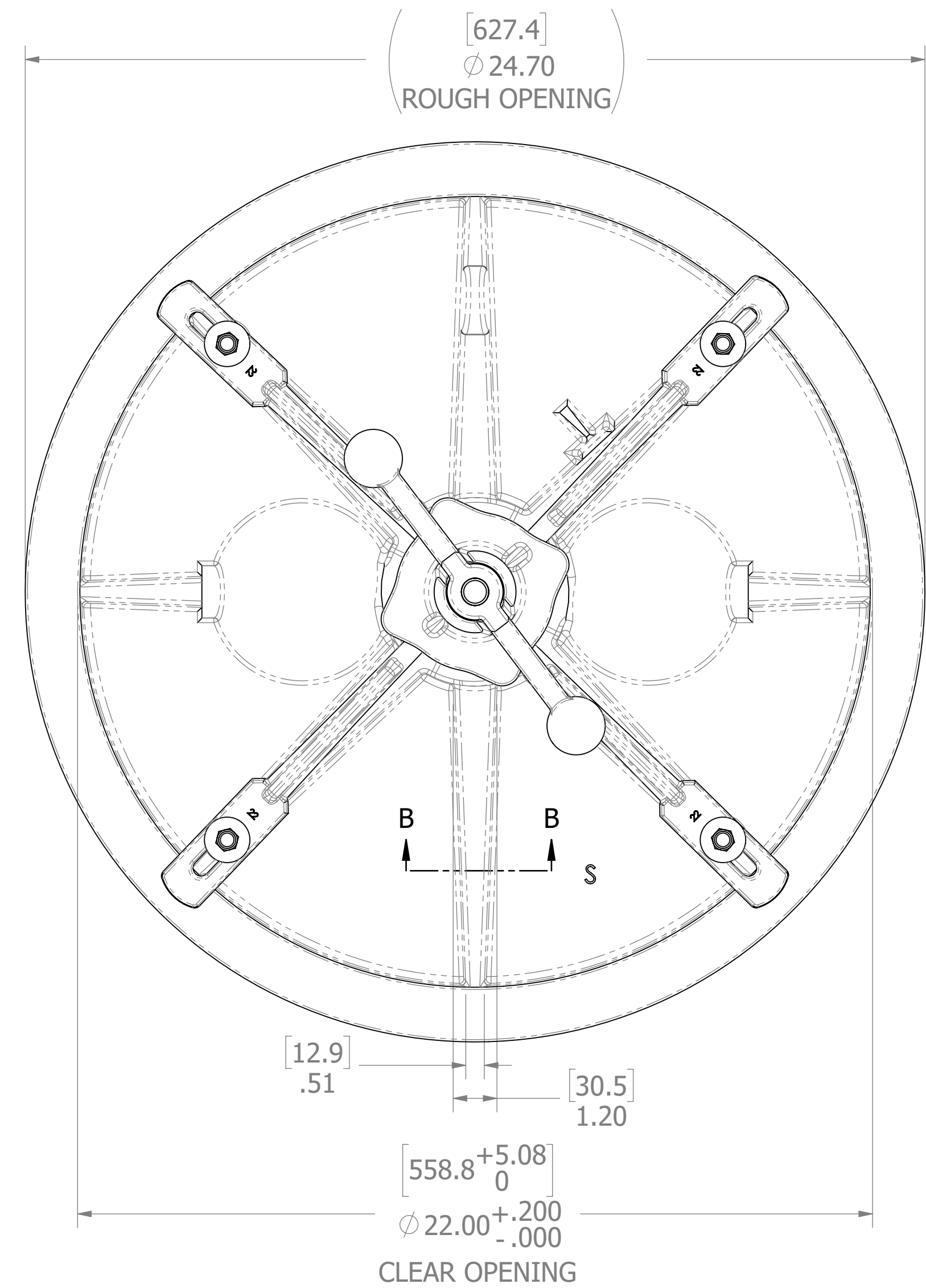
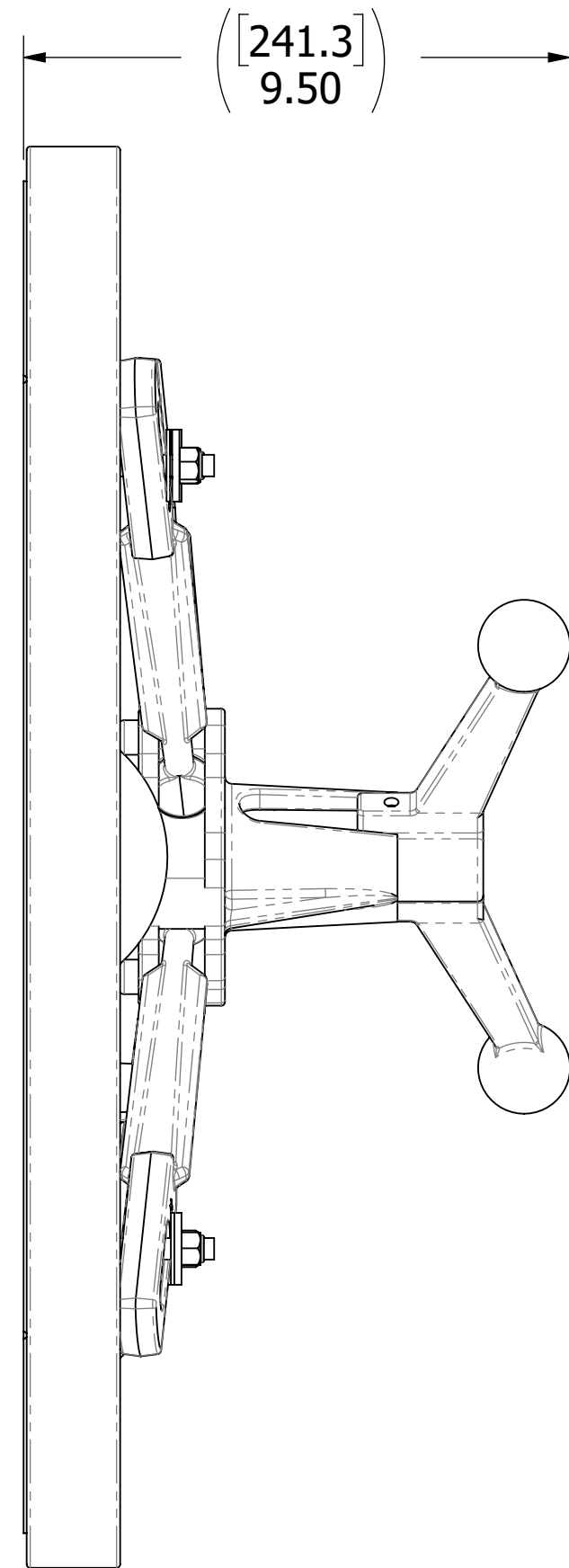
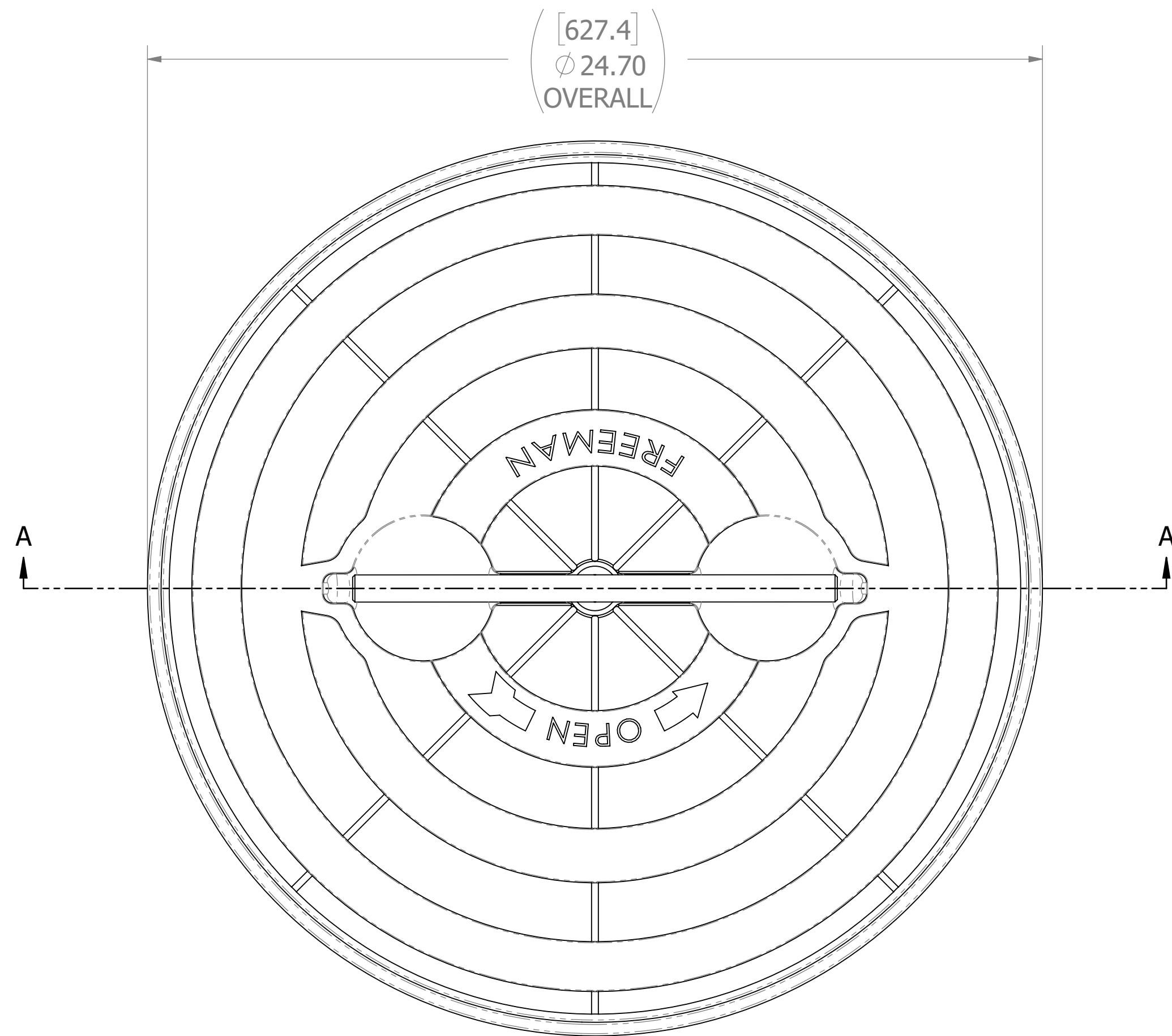
8 7 6 5 4 3 2 1

D

C

B

A



SECTION B-B
SCALE 1 : 1

10. FOR SPECIFIC INFORMATION CONTACT SALES.
9. COMPLETE ASSEMBLY WEIGHT W/ DECK RING, 60.1LBS
8. DOGGING PRESSURE FULLY ADJUSTABLE.
7. HANDLE POSITION TOPSIDE INDICATES WHETHER DOGGING MECHANISM IS IN OPEN OR CLOSED POSITION.
6. ALUMINUM ALLOY MECHANISM SHOWN.
5. FLUSH, WATERTIGHT CONSTRUCTION.
4. INTEGRAL TOPSIDE "T" HANDLE STANDARD, OTHER TOPSIDE ACTUATION AVAILABLE.
3. FLANGE CAN BE WELDED.
2. QUICK-ACTING, MECHANISM ENGAGES OR DISENGAGES IN QUARTER-TURN OF CENTER SPINDLE.
1. 22.00"/ 559MM DIAMETER CLEAR OPENING, ALL DIMENSIONS SHOWN SUBJECT TO CASTING VARIATION AND ARE REFERENCE ONLY.

NOTES: UNLESS OTHERWISE SPECIFIED.

CUSTOMER APPROVAL		
Signature: _____		
Date: _____		
<small>IMPORTANT! THIS DRAWING SUPERCEDES ALL OTHER DOCUMENTS. By signing this approval you accept and agree that the dimensions and details shown are correct and properly fit your application, regardless of any differences between this drawing and any contract specifications. Should you see any errors in the drawing, or have any questions, please contact your Freeman Marine sales engineer for clarification.</small>		
REV. A	PRODUCTION RELEASE	10MAR14 ZJC
REV.	DESCRIPTION:	DATE: DRAWN

SPECIFICATIONS SUBJECT TO CHANGE WITHOUT NOTICE.

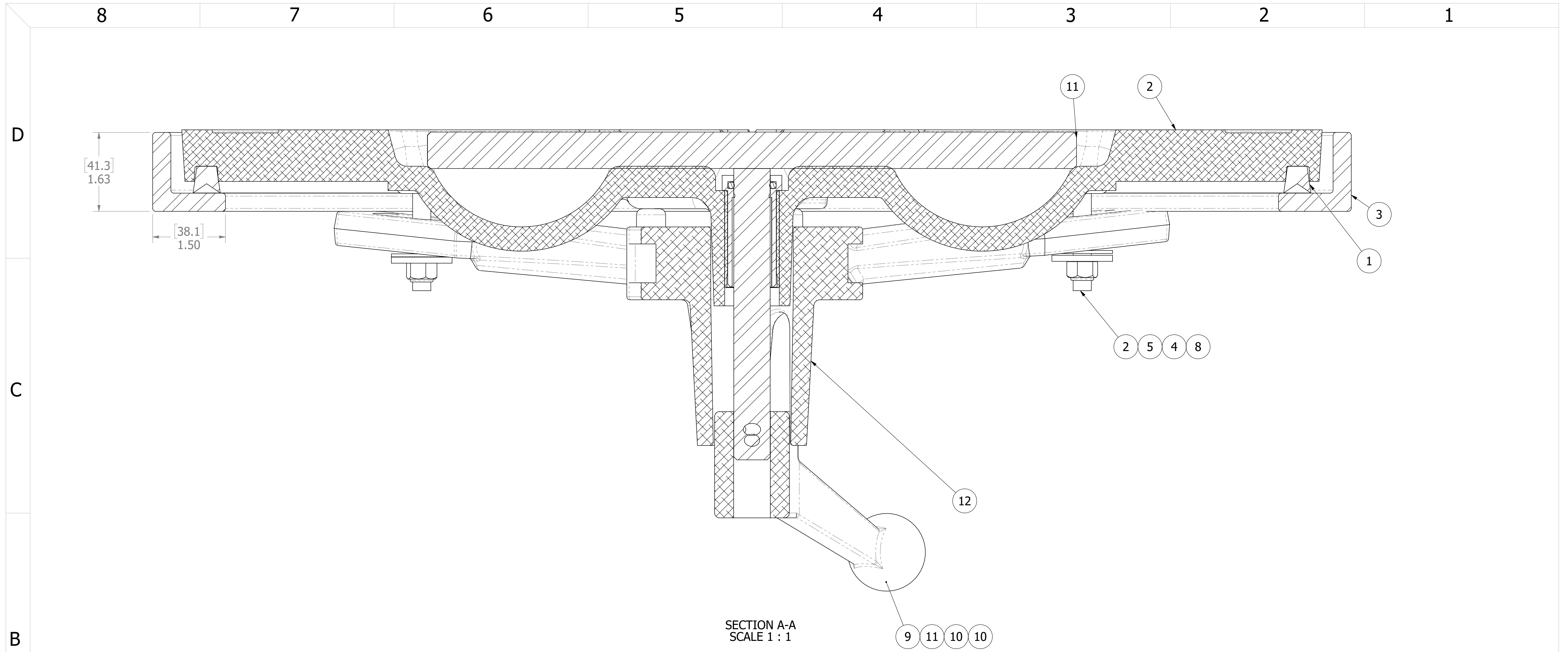
PROJECTION

UNLESS OTHERWISE SPECIFIED DIMENSIONS ARE IN INCHES, TOLERANCES FOR ROUGH AND CLEAR OPENING ± .125 INCH. ALL OTHERS ARE:

.X	.XX	.XXX	ANGLES
±.1	±.03	±.010	±2°

DO NOT SCALE DRAWING

		28336 HUNTER CREEK ROAD GOLD BEACH, OR 97444 U.S.A. PHONE: 541-247-7078 FAX: 541-247-2114 www.freemanmarine.com	
<small>CONFIDENTIAL PROPERTY OF FREEMAN MARINE EQUIPMENT, INC. UNAUTHORIZED USE, REPRODUCTION OR DISTRIBUTION IS STRICTLY PROHIBITED. ALL COPIES REMAIN THE PROPERTY OF FREEMAN MARINE EQUIPMENT, INC. AND MUST BE RETURNED UPON REQUEST.</small>		CLIENT: FREEMAN MARINE	
DRAWN: SFZ CARPENTER CHECKED: S MILLER ENGR: DESIGN ACTIVITY: CONTRACT NO.:		DATE: 2010 MAR 14 DATE: 10 MAR 14 DATE:	
TITLE: HATCH 22 ALUM COVER, MS RING		SIZE: D	CAGE CODE: 64747 DRAWING NUMBER: 2408-0003
		SCALE: 1:4 CALC. WT.	REV. A ACT. WT. SHEET 1 OF 2



SECTION A-A
SCALE 1 : 1

ITEM NO.	QTY.	PART NUMBER	DESCRIPTION	MATERIAL
12	1	0011-2002	HUB, AL, 4 HOLE	ALUMINUM, 535.2-F
11	1	0021-2050	HANDLE, S/S, ROUND BAR VM VERT GROOVE	
10	1	0031-2058	BUSHING ASSY, W/O-RING NO SLEEVE	REF S.A. BOM
9	1	0112-2003	ESCAPE HANDLE, AL	535.2-F
8	4	0211-2010	DOG, LOCKING ARM 22, AL	535.2-F
7	1	0411-2004	PIN, KNURLED .25 DIA X 2.25IN SS 316	316/316L
6	4	0411-2032	NUT .375IN NYLOCK	316/316L
5	4	0411-2033	WASHER .406 X 1.25 X .125IN SS 316	SS 316/316L
4	4	0413-2005	WASHER, .406 X 1.250 X .062 NYLON	NYLON
3	1	2408-1003	RING: 22 STEEL	MS
2	1	2408-3001	COVER: 22 ALUM, FINISHED CASTING	A356.0-T6
1	1	9801-2008	GASKET:	NEOPRENE

CUSTOMER APPROVAL

Signature: _____
 Date: _____
 IMPORTANT! THIS DRAWING SUPERSEDES ALL OTHER DOCUMENTS. By signing this approval you accept and agree that the dimensions and details shown are correct and properly fit your application, regardless of any differences between this drawing and any contract specifications. Should you see any errors in the drawing, or have any questions, please contact your Freeman Marine sales engineer for clarification.

SPECIFICATIONS SUBJECT TO CHANGE WITHOUT NOTICE.



UNLESS OTHERWISE SPECIFIED DIMENSIONS ARE IN INCHES, TOLERANCES FOR ROUGH AND CLEAR OPENING ± .125 INCH. ALL OTHERS ARE:

	.X	.XX	.XXX	ANGLES
	±.1	±.03	±.010	±2°

DO NOT SCALE DRAWING

FREEMAN
MARINE EQUIPMENT, INC.

28336 HUNTER CREEK ROAD
 GOLD BEACH, OR 97444 U.S.A.
 PHONE: 541-247-7078 FAX: 541-247-2114
 www.freemanmarine.com

CONFIDENTIAL PROPERTY OF FREEMAN MARINE EQUIPMENT, INC. UNAUTHORIZED USE, REPRODUCTION OR DISTRIBUTION IS STRICTLY PROHIBITED. ALL COPIES REMAIN THE PROPERTY OF FREEMAN MARINE EQUIPMENT, INC. AND MUST BE RETURNED UPON REQUEST.

DRAWN: SF Z CARPENTER DATE: 2010-MAR-10
 CHECKED: S MILLER DATE: 10-MAR-14
 ENGR: DATE: _____
 DESIGN ACTIVITY: DATE: _____
 CONTRACT NO.: _____

CLIENT:	FREEMAN MARINE			
TITLE:	HATCH 22 ALUM COVER, MS RING			
SIZE	CAGE CODE	DRAWING NUMBER	REV.	
D	64747	2408-0003	A	
SCALE: 1:4	CALC. WT.	ACT. WT.	SHEET 2 OF 2	

- 3. FINISH: 125 RMS MAX.
 - 2. BREAK SHARP EDGES AND DEBURR.
 - 1. MATERIAL: Material <not specified>
- NOTES: UNLESS OTHERWISE SPECIFIED.

A

B

C

D

8 7 6 5 4 3 2 1