

10. FOR SPECIFIC INFORMATION CONTACT SALES.
9. COMPLETE ASSEMBLY WEIGHT W/ DECK RING, 87LBS/ 39.5K.
8. DOGGING PRESSURE FULLY ADJUSTABLE.
7. HANDLE POSITION TOPSIDE INDICATES WHETHER DOGGING MECHANISM IS IN OPEN OR CLOSED POSITION.
6. STAINLESS STEEL MECHANISM SHOWN.
5. FLUSH, WATERTIGHT CONSTRUCTION.
4. INTEGRAL TOPSIDE "T" HANDLE STANDARD, OTHER TOPSIDE ACTUATION AVAILABLE.
3. MILD STEEL RING CAN BE WELDED.
2. QUICK-ACTING, MECHANISM ENGAGES OR DISENGAGES IN QUARTER-TURN OF CENTER SPINDLE.
1. 30.4" /773mm CLEAR OPENING, ALL DIMENSIONS SHOWN SUBJECT TO CASTING VARIATION AND ARE REFERENCE ONLY.

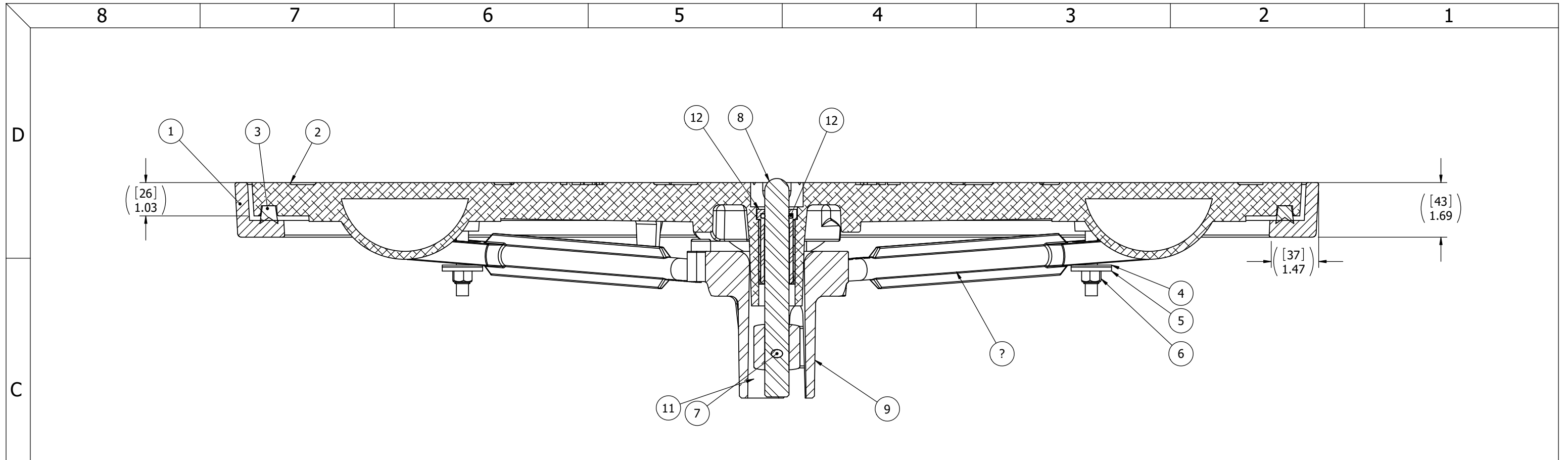
NOTES: UNLESS OTHERWISE SPECIFIED.

A

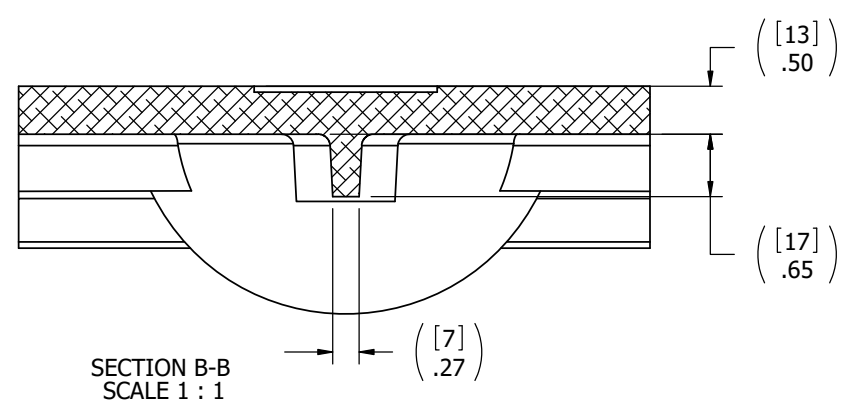
CUSTOMER APPROVAL		SIGNATURE: _____		DATE: _____	
IMPORTANT! THIS DRAWING SUPERSEDES ALL OTHER DOCUMENTS. By signing this approval you accept and agree that the dimensions and details shown are correct and properly fit your application, regardless of any differences between this drawing and any contract specifications. Should you see any errors in the drawing, or have any questions, please contact your Freeman Marine sales engineer for clarification.					
REV.	DESCRIPTION:	DATE:	DRAWN		
-	INITIAL RELEASE	25AUG10	GJM		
A	UPDATE GEN NOTES AND B.O.M.	12JUL11	PPC		

SPECIFICATIONS SUBJECT TO CHANGE WITHOUT NOTICE.			
PROJECTION			
UNLESS OTHERWISE SPECIFIED DIMENSIONS ARE IN INCHES, TOLERANCES FOR ROUGH AND CLEAR OPENING ± .125 INCH. ALL OTHERS ARE:			
.X	.XX	.XXX	ANGLES
±.1	±.03	±.010	±2°
DO NOT SCALE DRAWING			

<b>FREEMAN</b>		28336 HUNTER CREEK ROAD GOLD BEACH, OR 97444 U.S.A. PHONE: 541-247-7078 FAX: 541-247-2114 www.freemanmarine.com	
MARINE EQUIPMENT, INC.			
CONFIDENTIAL PROPERTY OF FREEMAN MARINE EQUIPMENT INC. UNAUTHORIZED USE, COPYING OR DISTRIBUTION IS STRICTLY PROHIBITED. POSSESSOR OF THIS DOCUMENT AGREES TO THE FOREGOING AND SHALL RETURN THIS DOCUMENT UPON REQUEST. © ALL RIGHTS RESERVED 2004		CLIENT: FREEMAN MARINE EQUIPMENT	
DRAWN: G MACEACHERN DATE: 25AUG10		TITLE: HATCH 30, AL COVER, STEEL RING S/S MECHANISM, W/INTEGRAL T-HANDLE	
CHECKED: DATE:		SIZE: D	
ENGR: DATE:		CAGE CODE: 64747	
DESIGN ACTIVITY: DATE:		DRAWING NUMBER: 2415-0007	
CONTRACT NO.:		REV. A	
SCALE: 1:4		CALC. WT. ACT. WT. SHEET 1 OF 3	



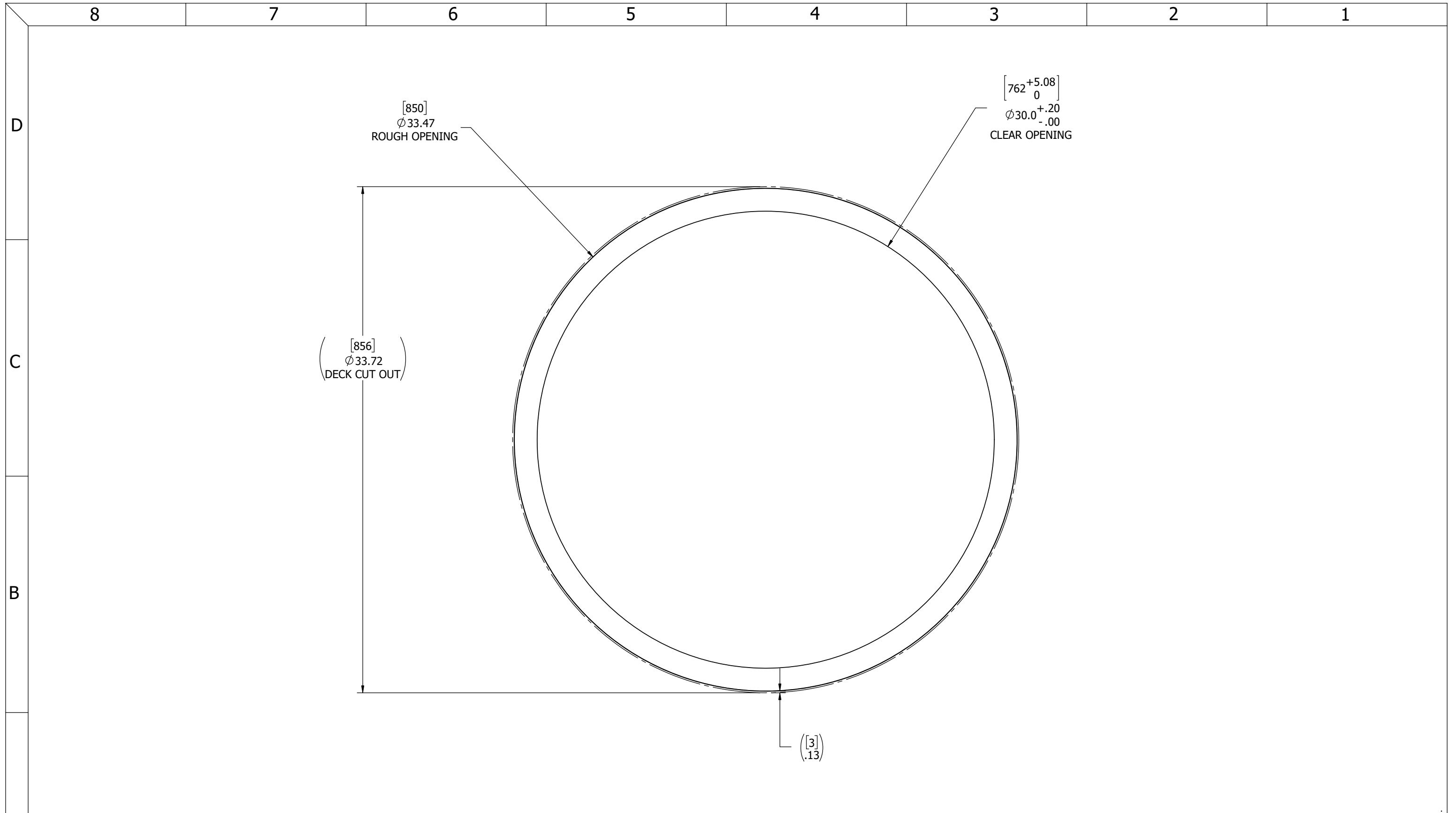
SECTION A-A



SECTION B-B  
SCALE 1 : 1

ITEM NO.	QTY.	PART NUMBER	DESCRIPTION	MATERIAL
12	1	0031-2058	BUSHING ASSY, W/O-RING NO SLEEVE	REF S.A. BOM
11	1	0212-2017	ACTUATOR, 316LD S/S	316/316L ANLD
10	4	0212-2012	DOG, LOCKING ARM 30	SS 316/316L ANLD
9	1	0212-2015	HUB, 4 HOLE, 316L LD	VARIES
8	1	0021-2005	HANDLE, S/S, ROUND BAR	SS 304/304L ANLD
7	1	0411-2004	PIN, KNURLED .25 DIA X 2.25IN SS 316	316/316L
6	4	0411-2032	NUT .375IN NYLOCK	316/316L
5	4	0411-2033	WASHER .406 X 1.25 X .125IN SS 316	316/316L
4	4	0413-2005	WASHER, .406X1.25X.062 NYLON	PTFE (general)
3	1	0631-9839	GASKET	Rubber
2	1	2415-3007	COVER, MODEL 30 H	6061 Alloy
1	1	2415-1007	RING: 30-H	STEEL A36

SPECIFICATIONS SUBJECT TO CHANGE WITHOUT NOTICE.		<b>FREEMAN</b> MARINE EQUIPMENT, INC.		28336 HUNTER CREEK ROAD GOLD BEACH, OR 97444 U.S.A. PHONE: 541-247-7078 FAX: 541-247-2114 www.freemanmarine.com	
UNLESS OTHERWISE SPECIFIED DIMENSIONS ARE IN INCHES, TOLERANCES FOR ROUGH AND CLEAR OPENING ± .125 INCH. ALL OTHERS ARE: .X .XX .XXX ANGLES ±.1 ±.03 ±.010 ±2°		CONFIDENTIAL PROPERTY OF FREEMAN MARINE EQUIPMENT INC. UNAUTHORIZED USE, COPYING OR DISTRIBUTION IS STRICTLY PROHIBITED. POSSESSOR OF THIS DOCUMENT AGREES TO THE FOREGOING AND SHALL RETURN THIS DOCUMENT UPON REQUEST. © ALL RIGHTS RESERVED 2004		CLIENT: <b>FREEMAN MARINE EQUIPMENT</b>	
PROJECTION		DRAWN: <b>G MACEACHERN</b> DATE: <b>25AUG10</b>		TITLE: <b>HATCH 30, AL COVER, STEEL RING S/S MECHANISM, W/INTEGRAL T-HANDLE</b>	
DO NOT SCALE DRAWING		CHECKED: DATE: ENGR: DATE: DESIGN ACTIVITY: DATE:		SIZE: <b>D</b> CAGE CODE: <b>64747</b> DRAWING NUMBER: <b>2415-0007</b> REV. <b>A</b>	
REV. DESCRIPTION: DATE: DRAWN		CONTRACT NO.:		SCALE: 2:3 CALC WT. ACT. WT. SHEET 2 OF 3	



- 3. FINISH: 125 RMS MAX.
- 2. BREAK SHARP EDGES AND DEBURR.
- 1. MATERIAL: Material <not specified>

NOTES: UNLESS OTHERWISE SPECIFIED.

CUSTOMER APPROVAL

Signature: \_\_\_\_\_  
Date: \_\_\_\_\_

IMPORTANT! THIS DRAWING SUPERSEDES ALL OTHER DOCUMENTS. By signing this approval you accept and agree that the dimensions and details shown are correct and properly fit your application, regardless of any differences between this drawing and any contract specifications. Should you see any errors in the drawing, or have any questions, please contact your Freeman Marine sales engineer for clarification.

REV.	DESCRIPTION:	DATE:	DRAWN
-	INITIAL RELEASE	25AUG10	GJM
A	UPDATE GEN NOTES AND B.O.M.	12JUL11	PPC

SPECIFICATIONS SUBJECT TO CHANGE WITHOUT NOTICE.

PROJECTION

UNLESS OTHERWISE SPECIFIED DIMENSIONS ARE IN INCHES, TOLERANCES FOR ROUGH AND CLEAR OPENING ± .125 INCH. ALL OTHERS ARE:

.X	.XX	.XXX	ANGLES
±.1	±.03	±.010	±2°

DO NOT SCALE DRAWING

 <small>CONFIDENTIAL PROPERTY OF FREEMAN MARINE EQUIPMENT, INC. UNAUTHORIZED USE, REPRODUCTION OR DISTRIBUTION IS STRICTLY PROHIBITED. ALL COPIES REMAIN THE PROPERTY OF FREEMAN MARINE EQUIPMENT, INC. AND MUST BE RETURNED UPON REQUEST. © ALL RIGHTS RESERVED 2012, FREEMAN MARINE EQUIPMENT, INC.</small>		28336 HUNTER CREEK ROAD GOLD BEACH, OR 97444 U.S.A. PHONE: 541-247-7078 FAX: 541-247-2114 www.freemanmarine.com	
		CLIENT: <b>FREEMAN MARINE EQUIPMENT</b>	
DRAWN: <b>G MACEACHERN</b> CHECKED: _____ ENGR: _____ DESIGN ACTIVITY: _____ CONTRACT NO.: _____		DATE: <b>25AUG10</b> DATE: _____ DATE: _____ DATE: _____	
TITLE: <b>HATCH 30, AL COVER, STEEL RING S/S MECHANISM, W/INTEGRAL T-HANDLE</b>		SIZE: <b>D</b>	CAGE CODE: <b>64747</b> DRAWING NUMBER: <b>2415-0007</b> SCALE: 1:3
		REV. <b>A</b>	ACT. WT. _____ SHEET 3 OF 3