

- 10. FOR SPECIFIC INFORMATION CONTACT SALES.
- 9. COMPLETE ASSEMBLY WEIGHT W/ DECK RING, 46.7LBS/ 21.2K.
- 8. DOGGING PRESSURE FULLY ADJUSTABLE.
- 7. HANDLE POSITION TOPSIDE INDICATES WHETHER DOGGING MECHANISM IS IN OPEN OR CLOSED POSITION.
- 6. ALUMINUM ALLOY MECHANISM SHOWN.
- 5. FLUSH, WATERTIGHT CONSTRUCTION.
- 4. INTEGRAL TOPSIDE "T" HANDLE STANDARD, OTHER TOPSIDE ACTUATION AVAILABLE.
- 3. CAST ALUMINUM ALLOY FLANGE, FLANGE CAN BE DRILLED FOR BOLTED INSTALLATIONS OR WELDED TO ALUMINUM.
- 2. QUICK-ACTING, MECHANISM ENGAGES OR DISENGAGES IN QUARTER-TURN OF CENTER SPINDLE.
- 1. 20.1 X 20.1 CLEAR OPENING, ALL DIMENSIONS SHOWN SUBJECT TO CASTING VARIATION AND ARE REFERENCE ONLY.

NOTES: UNLESS OTHERWISE SPECIFIED.

REV.	DESCRIPTION:	DATE:	DRAWN
-	INITIAL RELEASE	17JAN12	RR

SPECIFICATIONS SUBJECT TO CHANGE WITHOUT NOTICE.

PROJECTION

UNLESS OTHERWISE SPECIFIED DIMENSIONS ARE IN INCHES. TOLERANCES FOR ROUGH AND CLEAR OPENINGS: .125 INCH. ALL OTHERS ARE:
 .X .XX .XXX ANGLES
 ±.1 ±.03 ±.010 ±2°

DO NOT SCALE DRAWING

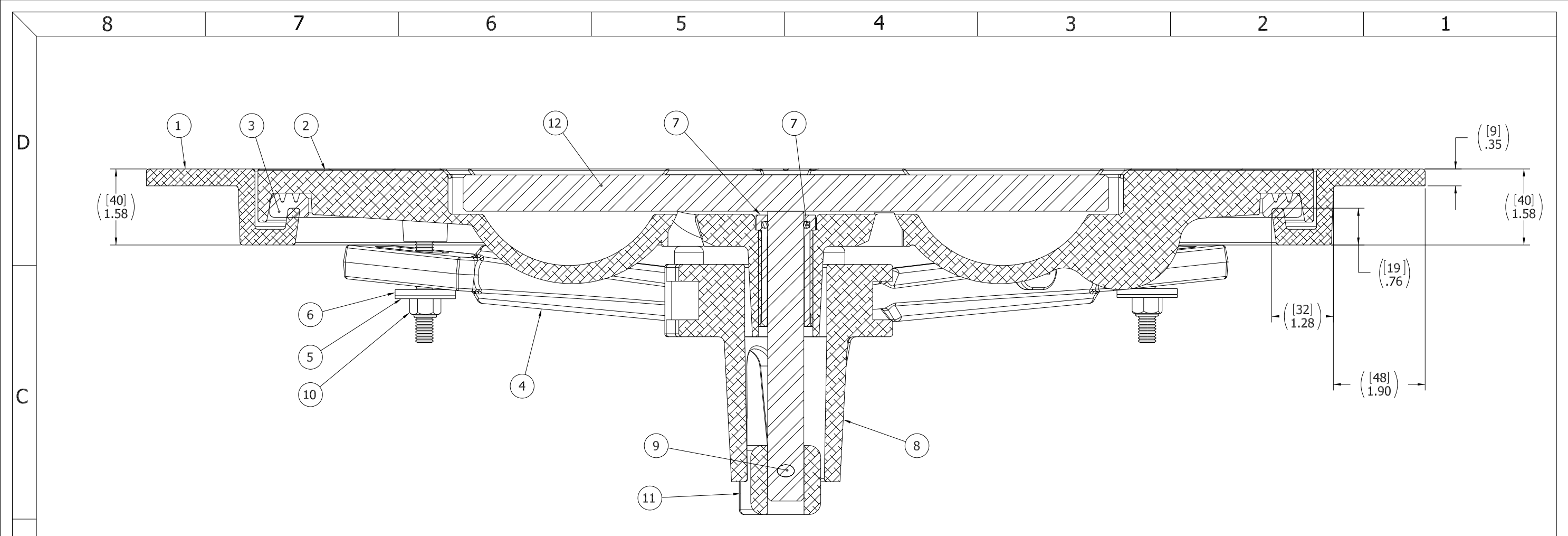
FREEMAN MARINE EQUIPMENT, INC.
 28336 HUNTER CREEK ROAD
 GOLD BEACH, OR 97444 U.S.A.
 PHONE: 541-247-7078 FAX: 541-247-2114
 www.freemanmarine.com

CLIENT: FREEMAN MARINE EQUIPMENT, INC.

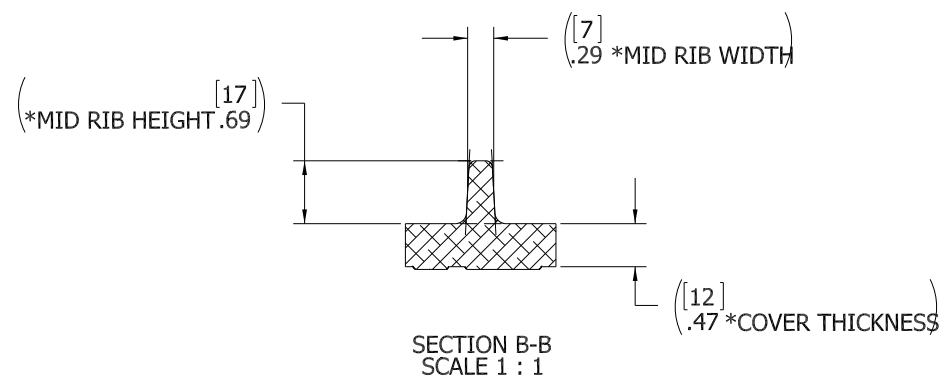
TITLE: HATCH: 2020-K, AL COVER
 AL. RING

SIZE	CAGE CODE	DRAWING NUMBER	REV.
D	64747	2422-0002	-

SCALE: 1:2.5 CALC. WT. ACT. WT. SHEET 1 OF 3



SECTION A-A
SCALE 1 : 1



SECTION B-B
SCALE 1 : 1

ITEM NO.	QTY.	PART NUMBER	DESCRIPTION	MATERIAL
12	1	0021-2005	HANDLE, S/S, ROUND BAR	STAINLESS STEEL, 316
11	1	0112-2001	ACTUATOR, AL	ALUMINUM, 535
10	4	0411-2032	NUT .375IN-16 SS 316 NYLOCK	SS 316/316L
9	1	0411-2004	PIN KNURLED .25 X 2.25IN SS 316	SS 316/316L
8	1	0011-2002	HUB, AL, 4 HOLE	ALUMINUM, 535.2-F
7	1	0031-2058	BUSHING ASSY, W/O-RING, NO SLEEVE	ACETRON/RUBBER
6	4	0411-2033	WASHER .406 X 1.25 X .125IN SS 316	SS 316/316L
5	4	0413-2005	WASHER, .406 X 1.250 X .062 NYLON	NYLON
4	4	0211-2009	DOG, LOCKING ARM, 2020, AL	ALUMINUM, 535.2-F
3	1	9813-2002	GASKET, 2020 (5.94' OF 0631-9813)	NEOPRENE
2	1	2422-3001	COVER: 2020 ALUM, FINISHED CASTING	ALUMINUM, A356.0-F
1	1	2422-1002	RING: 2020 ALUM	ALUMINUM, A356.0-F

REV.	DESCRIPTION:	DATE:	DRAWN
-	INITIAL RELEASE	17JAN12	RR

SPECIFICATIONS SUBJECT TO CHANGE WITHOUT NOTICE.

PROJECTION

UNLESS OTHERWISE SPECIFIED DIMENSIONS ARE IN INCHES. TOLERANCES FOR ROUGH AND CLEAR OPENINGS: .125 INCH. ALL OTHERS ARE:
.X .XX .XXX ANGLES
±.1 ±.03 ±.010 ±2°

DO NOT SCALE DRAWING

FREEMAN MARINE EQUIPMENT, INC.
28336 HUNTER CREEK ROAD
GOLD BEACH, OR 97444 U.S.A.
PHONE: 541-247-7078 FAX: 541-247-2114
www.freemanmarine.com

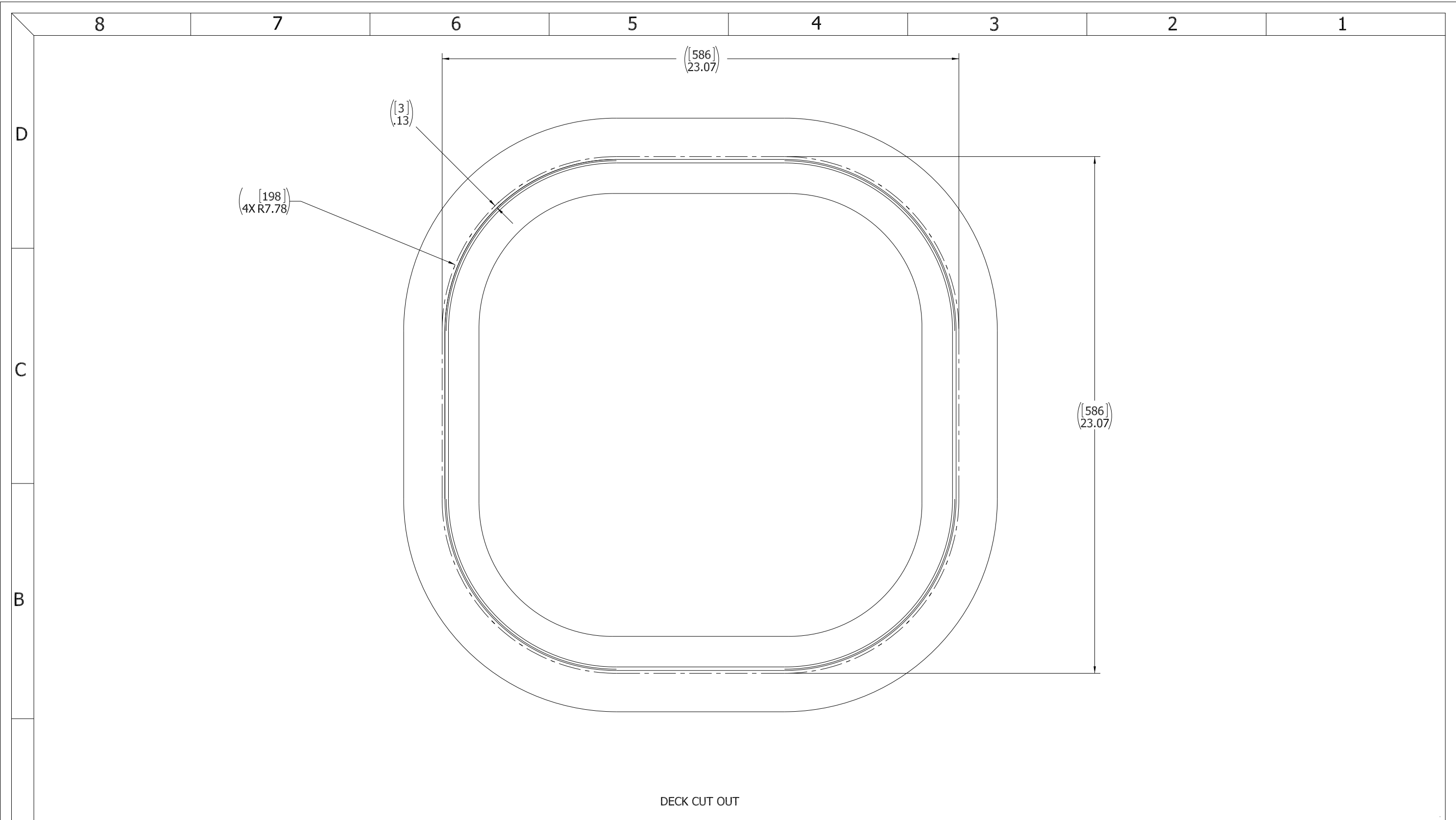
CLIENT: FREEMAN MARINE EQUIPMENT, INC.

TITLE: HATCH: 2020-K, AL COVER
AL. RING

SIZE: 64747
DRAWING NUMBER: 2422-0002

SCALE: 1:4
SHEET 2 OF 3

1. *COVER/RIB DIMENSIONS ARE REFERENCE ONLY DUE TO CASTING VARIATION.
NOTES: UNLESS OTHERWISE SPECIFIED.



DECK CUT OUT

- 3. FINISH: 125 RMS MAX.
- 2. BREAK SHARP EDGES AND DEBURR.
- 1. MATERIAL:

NOTES: UNLESS OTHERWISE SPECIFIED.

CUSTOMER APPROVAL

Signature: _____
 Date: _____

IMPORTANT! THIS DRAWING SUPERSEDES ALL OTHER DOCUMENTS. By signing this approval you accept and agree that the dimensions and details shown are correct and properly fit your application, regardless of any differences between this drawing and any contract specifications. Should you see any errors in the drawing, or have any questions, please contact your Freeman Marine sales engineer for clarification.

REV.	DESCRIPTION	DATE	DRAWN
-	INITIAL RELEASE	17JAN12	RR

SPECIFICATIONS SUBJECT TO CHANGE WITHOUT NOTICE.

PROJECTION

UNLESS OTHERWISE SPECIFIED DIMENSIONS ARE IN INCHES. TOLERANCES FOR ROUGH AND CLEAR OPENINGS: .125 INCH. ALL OTHERS ARE:
 .X .XX .XXX ANGLES
 ±.1 ±.03 ±.010 ±2°

DO NOT SCALE DRAWING

 <small>CONFIDENTIAL PROPERTY OF FREEMAN MARINE EQUIPMENT, INC. UNLESS OTHERWISE SPECIFIED. ALL RIGHTS RESERVED. THIS DRAWING IS THE PROPERTY OF FREEMAN MARINE EQUIPMENT, INC. AND SHALL BE RETURNED UPON REQUEST.</small> 28336 HUNTER CREEK ROAD GOLD BEACH, OR 97444 U.S.A. PHONE: 541-247-7078 FAX: 541-247-2114 www.freemanmarine.com		CLIENT: FREEMAN MARINE EQUIPMENT, INC.	
		TITLE: HATCH: 2020-K, AL COVER AL. RING	
DRAWN: R. REESE CHECKED: S. SNYDER ENGR: _____ DESIGN ACTIVITY: _____ CONTRACT NO.: _____	DATE: 17JAN12 DATE: 17JAN12 DATE: _____ DATE: _____	SIZE: D CAGE CODE: 64747 SCALE: 1:2.5	DRAWING NUMBER: 2422-0002 ACT. WT.: _____ SHEET 3 OF 3