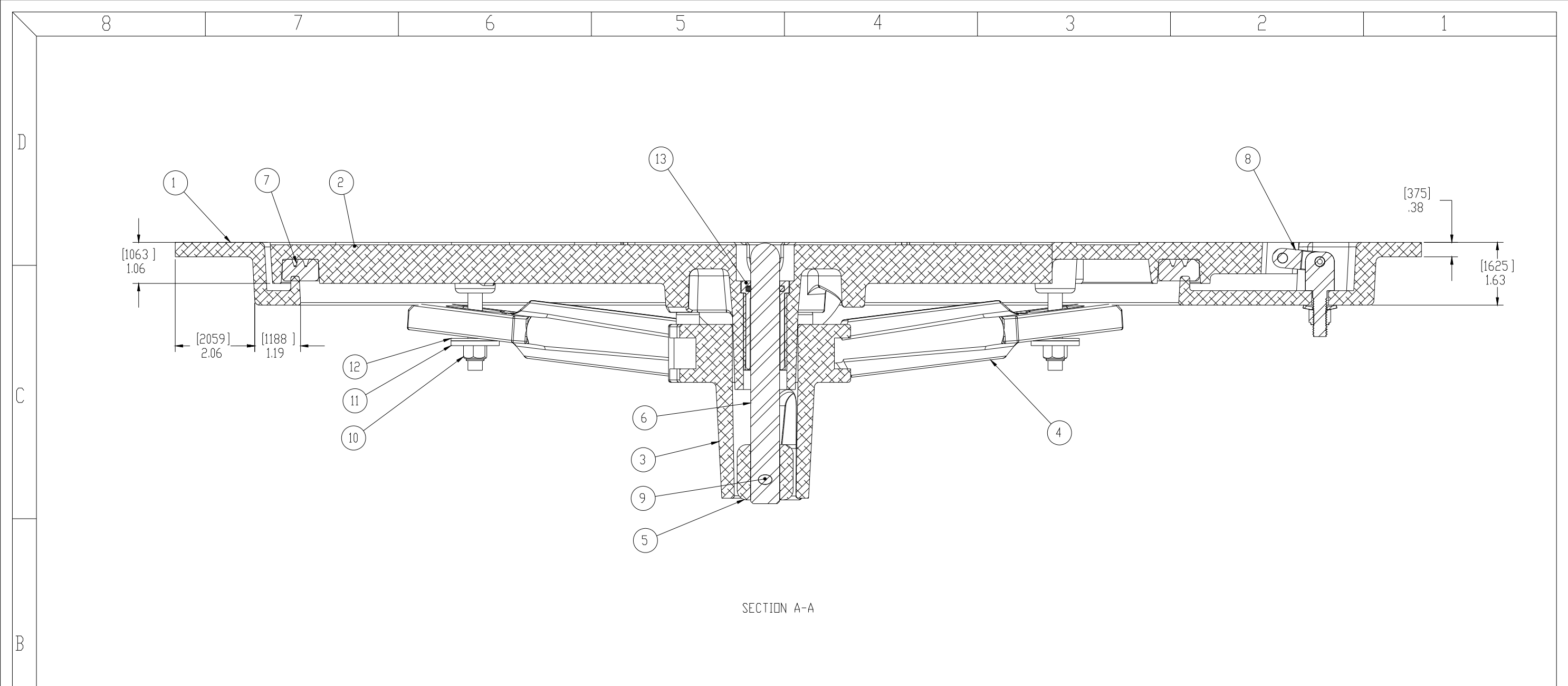
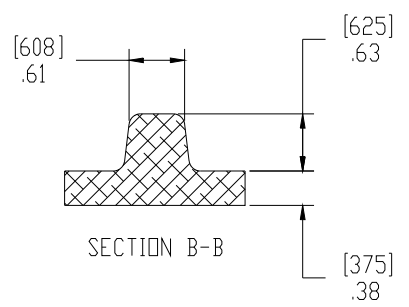


10. FOR SPECIFIC INFORMATION CONTACT SALES.
 9. COMPLETE ASSEMBLY WEIGHT W/ DECK RING, 56.2LBS/ 25.5K.
 8. DOGGING PRESSURE FULLY ADJUSTABLE.
 7. HANDLE POSITION TOPSIDE INDICATES WHETHER DOGGING MECHANISM IS IN OPEN OR CLOSED POSITION.
 6. ALUMINUM ALLOY MECHANISM SHOWN.
 5. FLUSH, WATERTIGHT CONSTRUCTION.
 4. INTEGRAL TOPSIDE 'T' HANDLE STANDARD, OTHER TOPSIDE ACTUATION AVAILABLE.
 3. CAST ALUMINUM ALLOY FLANGE, FLANGE CAN BE DRILLED FOR BOLTED INSTALLATIONS OR WELDED TO ALUMINUM.
 2. QUICK-ACTING, MECHANISM ENGAGES OR DISENGAGES IN QUARTER-TURN OF CENTER SPINDLE.
 1. 24.1" DIAMETER CLEAR OPENING, ALL DIMENSIONS SHOWN SUBJECT TO CASTING VARIATION AND ARE REFERENCE ONLY.
- NOTES: UNLESS OTHERWISE SPECIFIED.

SPECIFICATIONS SUBJECT TO CHANGE WITHOUT NOTICE.		FREEMAN MARINE EQUIPMENT, INC.		28336 HUNTER CREEK ROAD GOLD BEACH, OR 97444 U.S.A. PHONE: 541-247-7078 FAX: 541-247-2114 www.freemanmarine.com	
PROJECTION		<small>CONFIDENTIAL PROPERTY OF FREEMAN MARINE EQUIPMENT INC. UNAUTHORIZED USE, COPYING OR DISTRIBUTION IS EXPRESSLY PROHIBITED. POSSESSION OF THIS DOCUMENT GRANTS NO RIGHTS AND SHALL RETURN THIS DOCUMENT UPON REQUEST.</small>		CLIENT: FREEMAN MARINE	
<small>UNLESS OTHERWISE SPECIFIED DIMENSIONS ARE IN INCHES. TOLERANCES FOR ROUGH AND CLEAR OPENING ± .125 INCH. ALL OTHERS ARE:</small>		<small>© ALL RIGHTS RESERVED 2004</small>		TITLE: AL COVER, AL RING HATCH: 24-H K	
<small>.X .XX .XXX ANGLES</small> <small>±.1 ±.03 ±.010 ±2°</small>		DRAWN: G. MACEACHERN DATE: 22MAY07 CHECKED: DATE: ENGR: DATE: DESIGN ACTIVITY: DATE: CONTRACT NO:		SIZE: D CAGE CODE: 64747 DRAWING NUMBER: 2448-0002 SCALE: 1:2.75 CALC. WT. ACT. WT.	
A RE-DRAWN IN SOLIDWORKS B UPDATE GEN. NOTES & BOM	22MAY07 23AUG11	GJM PPC	DO NOT SCALE DRAWING	REV. B	SHEET 1 OF 2



SECTION A-A



SECTION B-B

ITEM NO.	QTY.	PART NUMBER	DESCRIPTION	MATERIAL
13	1	0031-2058	BUSHING ASSY, W/ O-RING, NO SLEEVE	ACETRON/RUBBER
12	4	0413-2005	WASHER, .406 X 1.250 X .062 NYLON	NYLON
11	4	0411-2033	WASHER, .406 X 1.25 X .125, 316 S/S	STAINLESS STEEL, 316
10	4	0411-2032	LOCKNUT, NYLON INSERT, 3/8-16, 316 S/S	STAINLESS STEEL, 316
9	1	0411-2004	PIN, KNURLED, 1/4 X 2-1/4, 316 S/S	STAINLESS STEEL, 316L
8	2	0461-2205	HINGE ASSY, DOUBLE-ACTING, CAST HATCH,2	REF S/A - B.O.M.
7	1	9813-2016	GASKET	NEOPRENE
6	1	0021-2005	HANDLE, S/S, ROUND BAR	STAINLESS STEEL, 316
5	1	0112-2001	ACTUATOR, AL	ALUMINUM, 535
4	4	0211-2018	DOG, LOCKING ARM	ALUMINUM, 535.2-F
3	1	0011-2002	HUB, AL, 4 HOLE	ALUMINUM, 535.2-F
2	1	2448-3001	COVER, 24 HK	ALUMINUM A356.0-F
1	1	2448-1002	RING: 24-K	ALUMINUM A356.0-F

SPECIFICATIONS SUBJECT TO CHANGE WITHOUT NOTICE.		FREEMAN MARINE EQUIPMENT, INC. 28336 HUNTER CREEK ROAD GOLD BEACH, OR 97444 U.S.A. PHONE: 541-247-7078 FAX: 541-247-2114 www.freemarmarine.com	
PROJECTION		CLIENT: FREEMAN MARINE	
UNLESS OTHERWISE SPECIFIED DIMENSIONS ARE IN INCHES. TOLERANCES FOR ROUGH AND CLEAR OPENING ± .125 INCH. ALL OTHERS ARE:		TITLE: HATCH: 24-H K AL COVER, AL RING W/ INTEGRAL TOPSIDE HANDLE	
X XX XXX ANGLES ±.1 ±.03 ±.010 ±.2*		DRAWN: G. MACEACHERN DATE: 22MAY07 CHECKED: DATE:	
DO NOT SCALE DRAWING		CONTRACT NO:	
A REDRAWN IN SOLIDWORKS 22MAY07 GJM		SIZE: D	
B UPDATE GEN. NOTES & BOM 23AUG11 PPC		CAGE CODE: 64747	
REV. DESCRIPTION DATE DRAWN		DRAWING NUMBER: 2448-0002	
		SCALE: 1:1.25	
		CALC. WT. ACT. WT.	
		SHEET 2 OF 2	