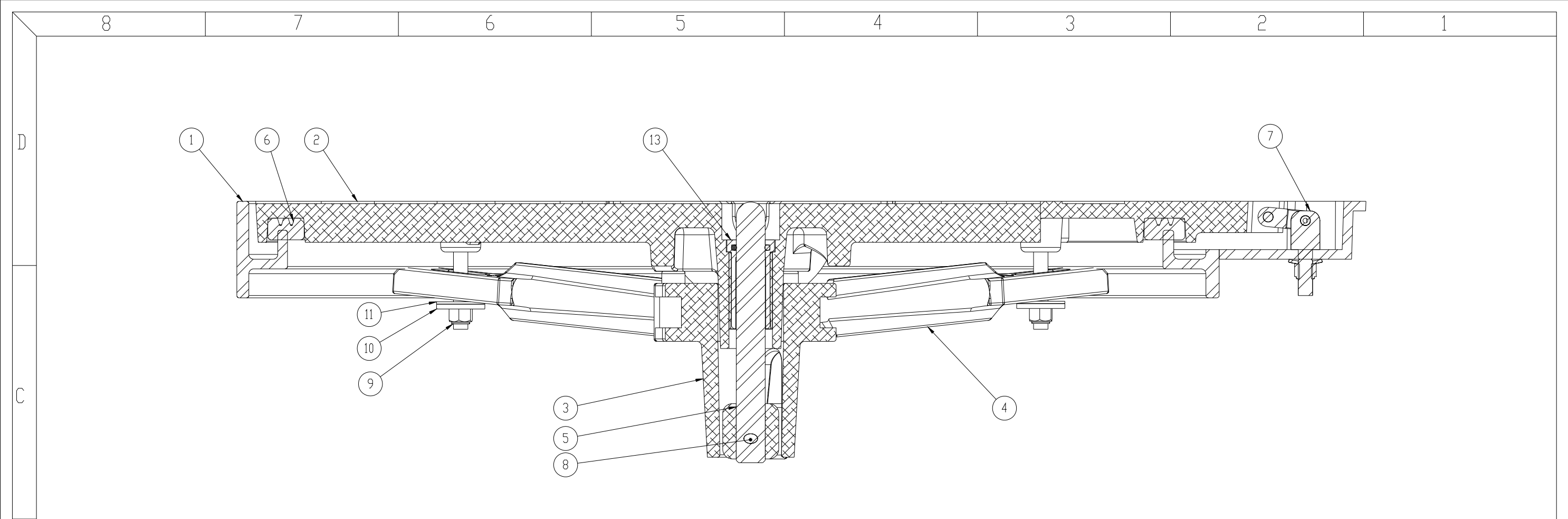


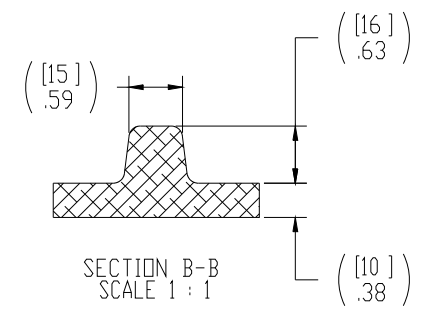
10. FOR SPECIFIC INFORMATION CONTACT SALES.
9. COMPLETE ASSEMBLY WEIGHT W/ DECK RING, 75.0LBS/ 34.0K.
8. DOGGING PRESSURE FULLY ADJUSTABLE.
7. HANDLE POSITION TOPSIDE INDICATES WHETHER DOGGING MECHANISM IS IN OPEN OR CLOSED POSITION.
6. ALUMINUM ALLOY MECHANISM SHOWN.
5. FLUSH, WATERTIGHT CONSTRUCTION.
4. INTEGRAL TOPSIDE "T" HANDLE STANDARD, OTHER TOPSIDE ACTUATION AVAILABLE.
3. MILD STEEL RING, FOR WELDED INSTALATIONS.
2. QUICK-ACTING, MECHANISM ENGAGES OR DISENGAGES IN QUARTER-TURN OF CENTER SPINDLE.
1. 24.0" DIAMETER CLEAR OPENING, ALL DIMENSIONS SHOWN SUBJECT TO CASTING VARIATION AND ARE REFERENCE ONLY.

NOTES: UNLESS OTHERWISE SPECIFIED

CUSTOMER APPROVAL		SPECIFICATIONS SUBJECT TO CHANGE WITHOUT NOTICE.		FREEMAN MARINE EQUIPMENT, INC.		28336 HUNTER CREEK ROAD GOLD BEACH, OR 97444 U.S.A. PHONE: 541-247-7078 FAX: 541-247-2114 www.freemarine.com	
Signature: _____		PROJECTION		<small>UNLESS OTHERWISE SPECIFIED DIMENSIONS ARE IN INCHES. TOLERANCES FOR ROUGH AND CLEAR OPENING ± .125 INCH. ALL OTHERS ARE:</small>		<small>CONFIDENTIAL PROPERTY OF FREEMAN MARINE EQUIPMENT INC. UNAUTHORIZED USE, COPYING OR DISTRIBUTION IS EXPRESSLY PROHIBITED. POSSESSION OF THIS DOCUMENT GRANTS NO RIGHTS AND SHALL RETURN THIS DOCUMENT UPON REQUEST.</small>	
Date: _____		<small>UNLESS OTHERWISE SPECIFIED DIMENSIONS ARE IN INCHES. TOLERANCES FOR ROUGH AND CLEAR OPENING ± .125 INCH. ALL OTHERS ARE:</small>		<small>© ALL RIGHTS RESERVED 2004</small>		CLIENT: FREEMAN MARINE	
<small>IMPORTANT! THIS DRAWING SUPERSEDES ALL OTHER DOCUMENTS. By signing this approval you accept and agree that the dimensions and details shown are correct and properly fit your application, regardless of any differences between this drawing and any contract specifications. Should you see any errors in the drawing, or have any questions, please contact your Freeman Marine sales engineer for clarification.</small>		<small>DO NOT SCALE DRAWING</small>		DRAWN: Z CARPENTER DATE: 06SEP13 CHECKED: P HENDRICKSON DATE: 06SEP13 ENGR: DATE: DESIGN ACTIVITY: DATE: CONTRACT NO:		TITLE: HATCH: 24-H K AL COVER, MILD STEEL RING W/ INTEGRAL TOPSIDE HANDLE	
REV. DESCRIPTION DATE DRAWN		06SEP13 ZJC		SIZE: D		CAGE CODE: 64747	
				DRAWING NUMBER: 2448-0003		REV. A	
				SCALE: 1:2.75		SHEET 1 OF 3	

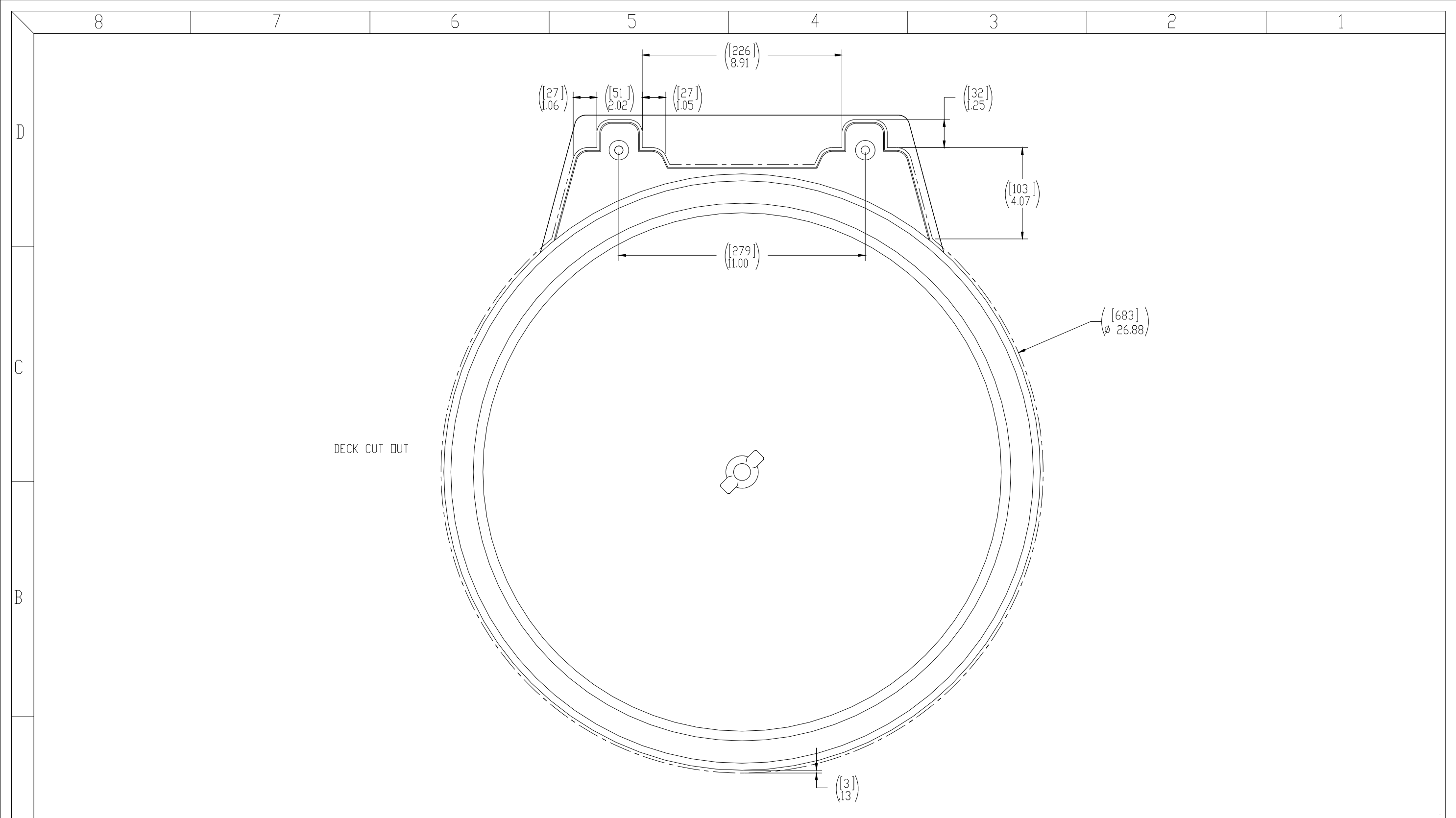


SECTION A-A



ITEM NO.	QTY.	PART NUMBER	DESCRIPTION	MATERIAL
13	1	0031-2058	BUSHING ASSY, W/O-RING, NO SLEEVE	ACETRON/RUBBER
12	1	0112-2001	ACTUATOR, AL	ALUMINUM, 535
11	4	0413-2005	WASHER, .406 X 1.250 X .062 NYLON	NYLON
10	4	0411-2033	WASHER, .406 X 1.25 X .125, 316 S/S	STAINLESS STEEL, 316
9	4	0411-2032	LOCKNUT, NYLON INSERT, 3/8-16, 316 S/S	STAINLESS STEEL, 316
8	1	0411-2004	PIN, KNURLED, 1/4 X 2-1/4, 316 S/S	STAINLESS STEEL, 316L
7	2	0461-2205	HINGE ASSY, DOUBLE-ACTING, CAST HATCH,2	REF S/A - B.O.M.
6	1	9813-2016	GASKET	NEOPRENE
5	1	0021-2005	HANDLE, S/S, ROUND BAR	STAINLESS STEEL, 316
4	4	0211-2018	DOG, LOCKING ARM	ALUMINUM, 535.2-F
3	1	0011-2002	HUB, AL, 4 HDLE	ALUMINUM, 535.2-F
2	1	2448-3001	COVER, 24 HK	ALUMINUM A356.0-F
1	1	2448-1003	RING, 24-H K	Alloy Steel

SPECIFICATIONS SUBJECT TO CHANGE WITHOUT NOTICE. PROJECTION		FREEMAN MARINE EQUIPMENT, INC. 28336 HUNTER CREEK ROAD GOLD BEACH, OR 97444 U.S.A. PHONE: 541-247-7078 FAX: 541-247-2114 www.freemarinmarine.com	
UNLESS OTHERWISE SPECIFIED DIMENSIONS ARE IN INCHES. TOLERANCES FOR ROUGH AND CLEAR OPENING ± .125 INCH. ALL OTHERS ARE: .X .XX .XXX ANGLES ±.1 ±.03 ±.010 ±2° DO NOT SCALE DRAWING		CLIENT: FREEMAN MARINE TITLE: HATCH: 24-H K AL COVER, MILD STEEL RING W/ INTEGRAL TOPSIDE HANDLE	
DRAWN: Z CARPENTER DATE: 06SEPI3 CHECKED: P HENDRICKSON DATE: 06SEPI3 ENGR: DATE: DESIGN ACTIVITY: DATE: CONTRACT NO:		SIZE: D CAGE CODE: 64747 SCALE: 1:1.25	DRAWING NUMBER: 2448-0003 REV: A SHEET 2 OF 3



- 3. FINISH: 125 RMS MAX.
 - 2. BREAK SHARP EDGES AND DEBURR.
 - 1. MATERIAL: REF. S/A - B.O.M.
- NOTES: UNLESS OTHERWISE SPECIFIED.

CUSTOMER APPROVAL

Signature: _____
 Date: _____

IMPORTANT! THIS DRAWING SUPERSEDES ALL OTHER DOCUMENTS. By signing this approval you accept and agree that the dimensions and details shown are correct and properly fit your application, regardless of any differences between this drawing and any contract specifications. Should you see any errors in the drawing, or have any questions, please contact your Freeman Marine sales engineer for clarification.

SPECIFICATIONS SUBJECT TO CHANGE WITHOUT NOTICE.		
PROJECTION		
UNLESS OTHERWISE SPECIFIED DIMENSIONS ARE IN INCHES. TOLERANCES FOR ROUGH AND CLEAR OPENING ± .125 INCH. ALL OTHERS ARE:		
.X	.XX	.XXX ANGLES
±.1	±.03	±.010 ±2°
DO NOT SCALE DRAWING		
REV.	DESCRIPTION	DATE
A	PRODUCTION RELEASE	06SEP13
		ZJC
		DRAWN

FREEMAN MARINE EQUIPMENT, INC. <small>CONFIDENTIAL PROPERTY OF FREEMAN MARINE EQUIPMENT, INC. UNLESS OTHERWISE SPECIFIED, ALL DIMENSIONS, TOLERANCES, FINISHES, AND MATERIALS ARE AS SHOWN ON THIS DRAWING. © ALL RIGHTS RESERVED 2012, FREEMAN MARINE EQUIPMENT, INC.</small>		28336 HUNTER CREEK ROAD GOLD BEACH, OR 97444 U.S.A. PHONE: 541-247-7078 FAX: 541-247-2114 WWW.FREEMANMARINE.COM	
		CLIENT:	FREEMAN MARINE
DRAWN: Z CARPENTER DATE: 06SEP13 CHECKED: P HENDRICKSON DATE: 06SEP13 ENGR: DATE: DESIGN ACTIVITY: DATE: CONTRACT NO:		TITLE:	HATCH: 24-H K AL COVER, MILD STEEL RING
SIZE:	D	CAGE CODE:	64747
DRAWING NUMBER:	2448-0003	REV.:	A
SCALE:	1:2	CALC. WT.:	ACT. WT.:
			SHEET 3 OF 3