

10. FOR SPECIFIC INFORMATION CONTACT SALES.
9. COMPLETE ASSEMBLY WEIGHT W/ DECK RING, 54.4lb/24.6kg.
8. DOGGING PRESSURE FULLY ADJUSTABLE.
7. HANDLE POSITION TOPSIDE INDICATES WHETHER DOGGING MECHANISM IS IN OPEN OR CLOSED POSITION.
6. ALUMINUM ALLOY MECHANISM SHOWN.
5. FLUSH, WATERTIGHT CONSTRUCTION.
4. INTEGRAL TOPSIDE "T" HANDLE STANDARD, OTHER TOPSIDE ACTUATION AVAILABLE.
3. CAST ALUMINUM ALLOY FLANGE, FLANGE CAN BE DRILLED FOR BOLTED INSTALLATIONS OR WELDED TO ALUMINUM.
2. QUICK-ACTING, MECHANISM ENGAGES OR DISENGAGES IN QUARTER-TURN OF CENTER SPINDLE.
1. 23.75"/ 603MM DIAMETER CLEAR OPENING, ALL DIMENSIONS SHOWN SUBJECT TO CASTING VARIATION AND ARE REFERENCE ONLY.

NOTES: UNLESS OTHERWISE SPECIFIED.

CUSTOMER APPROVAL

Signature: _____
Date: _____

IMPORTANT! THIS DRAWING SUPERSEDES ALL OTHER DOCUMENTS. By signing this approval you accept and agree that the dimensions and details shown are correct and properly fit your application, regardless of any differences between this drawing and any contract specifications. Should you see any errors in the drawing, or have any questions, please contact your Freeman Marine sales engineer for clarification.

REV.	DESCRIPTION	DATE	DRAWN
03	UPDATED AS PER ECN-027-21	10MAR 2021	TD
B	GASKET WAS 9885-2006	23MAR2017	AVS
A	UPDATE GENERAL NOTES AND B.O.M.	08JUL2011	PPC
-	INITIAL RELEASE	22JUN2008	SAS

SPECIFICATIONS SUBJECT TO CHANGE WITHOUT NOTICE.

PROJECTION

UNLESS OTHERWISE SPECIFIED DIMENSIONS ARE IN INCHES, TOLERANCES FOR ROUGH AND CLEAR OPENING $\pm .125$ INCH. ALL OTHERS ARE:

.X	.XX	.XXX	ANGLES
$\pm .1$	$\pm .03$	$\pm .010$	$\pm 2^\circ$

DO NOT SCALE DRAWING

FREEMAN MARINE EQUIPMENT, INC.

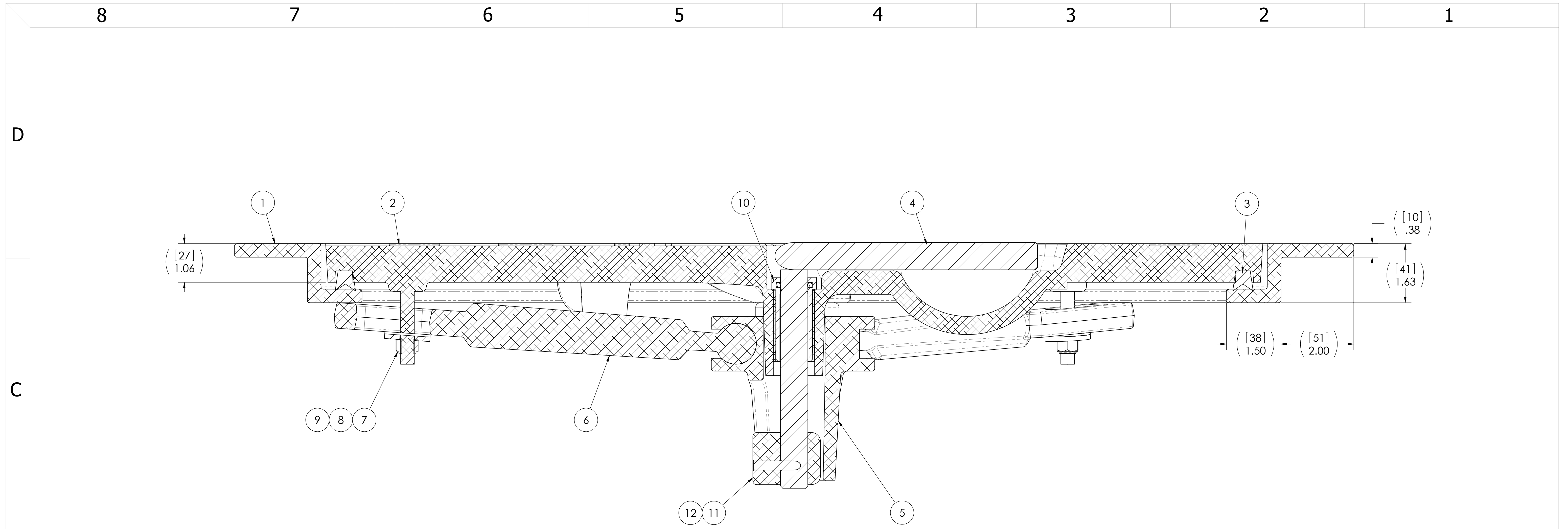
28336 HUNTER CREEK ROAD
GOLD BEACH, OR 97444 U.S.A.
PHONE: 541-247-7078 FAX: 541-247-2114
www.freemanmarine.com

CLIENT: **FREEMAN MARINE**

TITLE: **HATCH: 24, AL COVER, AL RING**

DRAWN: S SNYDER DATE: 7/22/2008
CHECKED: G. MACEACHERN DATE: 7/08/2011
ENGR: DATE: _____
DESIGN ACTIVITY: DATE: _____
CONTRACT NO.: _____

SIZE	CAGE CODE	DRAWING NUMBER	REV.
D	64747	2411-0002	03
SCALE: 1:3	CALC. WT.	ACT. WT.	SHEET 1 OF 3



SECTION A-A

ITEM NO.	QTY.	PART NUMBER	DESCRIPTION	MATERIAL
12	1	0411-2004	PIN, KNURLED .25 DIA X 2.25IN SS 316	316/316L
11	1	0112-2001	ACTUATOR, AL	535.2-F
10	1	0031-2058	BUSHING ASSY, W/O-RING NO SLEEVE	REF S.A. BOM
9	4	0413-2005	WASHER, .406X1.25X.062 NYLON	PTFE (general)
8	4	0411-2033	WASHER .406 X 1.25 X .125IN SS 316	316/316L
7	4	0411-2032	NUT .375IN NYLOCK	316/316L
6	4	0211-2012	DOG, LOCKING ARM 24, AL	535.2-F
5	1	0011-2002	HUB, AL, 4 HOLE	535.2-F
4	1	0021-2050	HANDLE, S/S, ROUND BAR VM VERT GROOVE	316/316L
3	1	9801-2009	GASKET: 24 - 6.54FT 0631-9801	NEOPRENE
2	1	2411-3001	COVER: 24 ALUM, FINISHED CASTING	A356.0-T6
1	1	2411-1002	RING: 24 ALUM	6061 Alloy

REV.	DESCRIPTION	DATE	DRAWN
03	UPDATED AS PER ECN-027-21	10MAR 2021	TD
B	GASKET WAS 9885-2006	23MAR2017	AVS
A	UPDATE GENERAL NOTES AND B.O.M.	08JUL2011	PPC
-	INITIAL RELEASE	22JUN2008	SAS

SPECIFICATIONS SUBJECT TO CHANGE WITHOUT NOTICE.

PROJECTION

UNLESS OTHERWISE SPECIFIED DIMENSIONS ARE IN INCHES, TOLERANCES FOR ROUGH AND CLEAR OPENING ± .125 INCH. ALL OTHERS ARE:

.X	.XX	.XXX	ANGLES
±.1	±.03	±.010	±2°

DO NOT SCALE DRAWING

FREEMAN MARINE EQUIPMENT, INC.

28336 HUNTER CREEK ROAD
GOLD BEACH, OR 97444 U.S.A.
PHONE: 541-247-7078 FAX: 541-247-2114
www.freemanmarine.com

CONFIDENTIAL PROPERTY OF FREEMAN MARINE EQUIPMENT, INC. UNAUTHORIZED USE, REPRODUCTION OR DISTRIBUTION IS STRICTLY PROHIBITED. ALL COPIES REMAIN THE PROPERTY OF FREEMAN MARINE EQUIPMENT, INC. AND MUST BE RETURNED UPON REQUEST.

CLIENT: **FREEMAN MARINE**

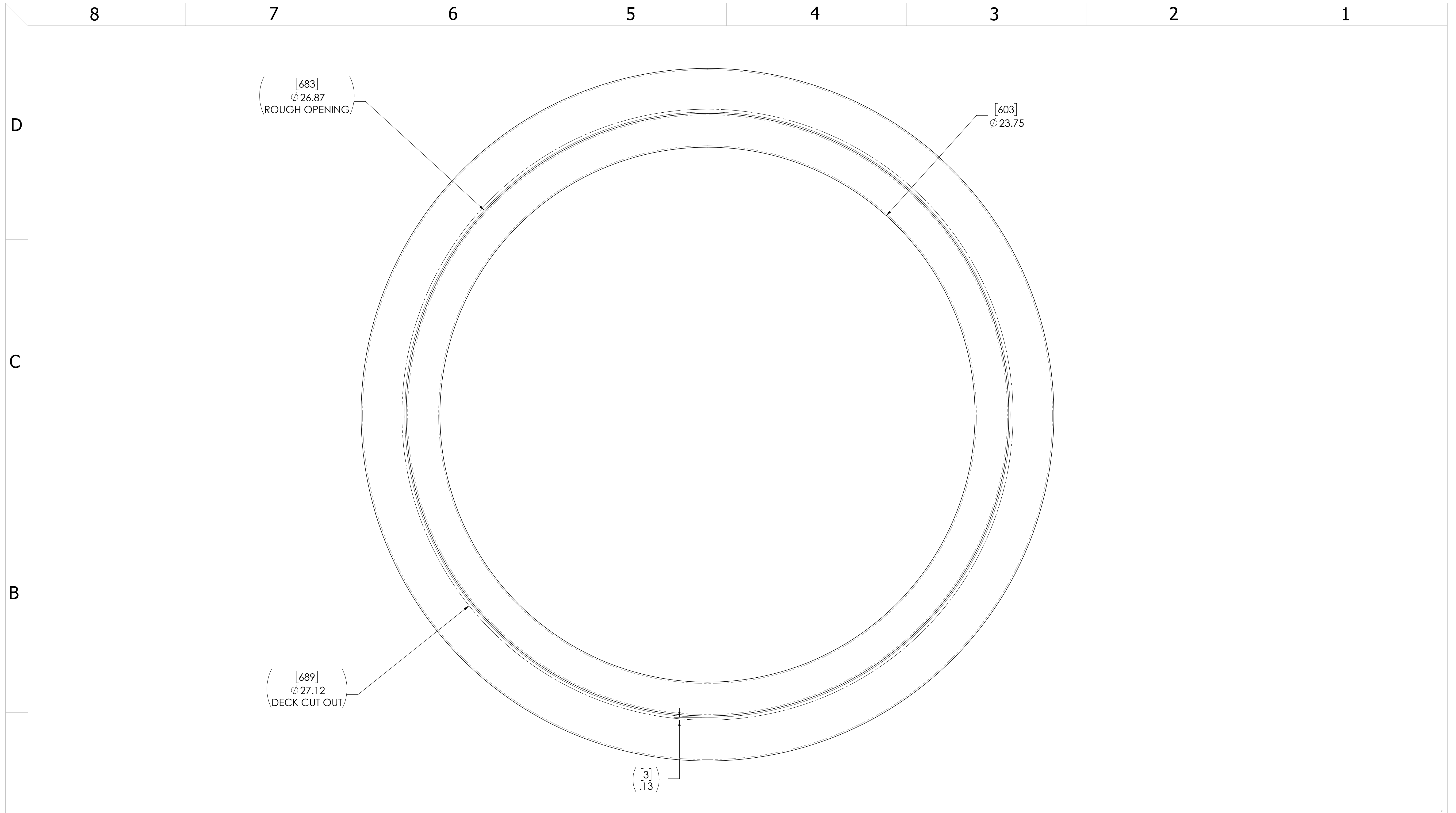
TITLE: **HATCH: 24, AL COVER, AL RING**

DRAWN: S SNYDER DATE: 7/22/2008
CHECKED: G. MACEACHERN DATE: 7/08/2011
ENGR: DATE:

SIZE: **D** CAGE CODE: **64747** DRAWING NUMBER: **2411-0002** REV. **03**

SCALE: 3:4 CALC. WT. ACT. WT. SHEET 2 OF 3

A



- 3. FINISH: 125 RMS MAX.
 - 2. BREAK SHARP EDGES AND DEBURR.
 - 1. MATERIAL: ALUMINUMMaterial <not specified>
- NOTES: UNLESS OTHERWISE SPECIFIED.

CUSTOMER APPROVAL

Signature: _____
 Date: _____

IMPORTANT! THIS DRAWING SUPERSEDES ALL OTHER DOCUMENTS. By signing this approval you accept and agree that the dimensions and details shown are correct and properly fit your application, regardless of any differences between this drawing and any contract specifications. Should you see any errors in the drawing, or have any questions, please contact your Freeman Marine sales engineer for clarification.

REV.	DESCRIPTION:	DATE:	DRAWN
03	UPDATED AS PER ECN-027-21	10MAR 2021	TD
B	GASKET WAS 9885-2006	23MAR2017	AVS
A	UPDATE GENERAL NOTES AND B.O.M.	08JUL2011	PPC
-	INITIAL RELEASE	22JUN2008	SAS

SPECIFICATIONS SUBJECT TO CHANGE WITHOUT NOTICE.

PROJECTION

UNLESS OTHERWISE SPECIFIED DIMENSIONS ARE IN INCHES, TOLERANCES FOR ROUGH AND CLEAR OPENING ± .125 INCH. ALL OTHERS ARE:

.X	.XX	.XXX	ANGLES
±.1	±.03	±.010	±2°

DO NOT SCALE DRAWING

FREEMAN MARINE EQUIPMENT, INC.

CONFIDENTIAL PROPERTY OF FREEMAN MARINE EQUIPMENT, INC. UNAUTHORIZED USE, REPRODUCTION OR DISTRIBUTION IS STRICTLY PROHIBITED. ALL CODES REMAIN THE PROPERTY OF FREEMAN MARINE EQUIPMENT, INC. AND MUST BE RETURNED UPON REQUEST. © ALL RIGHTS RESERVED 2012, FREEMAN MARINE EQUIPMENT, INC.

28336 HUNTER CREEK ROAD
 GOLD BEACH, OR 97444 U.S.A.
 PHONE: 541-247-7078 FAX: 541-247-2114
 www.freemanmarine.com

CLIENT: **FREEMAN MARINE**

TITLE: **HATCH: 24, AL COVER, AL RING**

SIZE	CAGE CODE	DRAWING NUMBER	REV.
D	64747	2411-0002	03

SCALE: 1:2 CALC. WT. ACT. WT. SHEET 3 OF 3