

10. FOR SPECIFIC INFORMATION CONTACT SALES.
9. COMPLETE ASSEMBLY WEIGHT W/ DECK RING, 58.8LBS/ 26.7K.
8. DOGGING PRESSURE FULLY ADJUSTABLE.
7. HANDLE POSITION TOPSIDE INDICATES WHETHER DOGGING MECHANISM IS IN OPEN OR CLOSED POSITION.
6. ALUMINUM ALLOY MECHANISM SHOWN.
5. FLUSH, WATERTIGHT CONSTRUCTION.
4. INTEGRAL TOPSIDE "T" HANDLE STANDARD, OTHER TOPSIDE ACTUATION AVAILABLE.
3. MILD STEEL RING CAN BE WELDED.
2. QUICK-ACTING, MECHANISM ENGAGES OR DISENGAGES IN QUARTER-TURN OF CENTER SPINDLE.
1. 24.1" DIAMETER CLEAR OPENING, ALL DIMENSIONS SHOWN SUBJECT TO CASTING VARIATION AND ARE REFERENCE ONLY.

NOTES: UNLESS OTHERWISE SPECIFIED.

CUSTOMER APPROVAL

Signature: _____

Date: _____

IMPORTANT! THIS DRAWING SUPERSEDES ALL OTHER DOCUMENTS. By signing the approval you accept and agree that the dimensions and details shown are correct and properly fit your application, regardless of any difference between this drawing and any contract specifications. Should you see any errors in the drawing, or have any questions, please contact your Freeman Marine sales engineer for clarification.

REV.	DESCRIPTION:	DATE:	DRAWN:
11	UPDATED PER ECN 394-19	11DEC19	ZC
A	UPDATE GEN. NOTES & B.O.M	23MAY21	PPC
	INITIAL RELEASE	09JAN00	GJM

PROJECTION

UNLESS OTHERWISE SPECIFIED DIMENSIONS ARE IN INCHES. TOLERANCES FOR ROUGH AND CLEAR OPENING ±.125 INCH. ALL OTHERS ARE:

±.1 ±.03 ±.010 ±2°

DO NOT SCALE DRAWING

FREEMAN MARINE EQUIPMENT, INC.

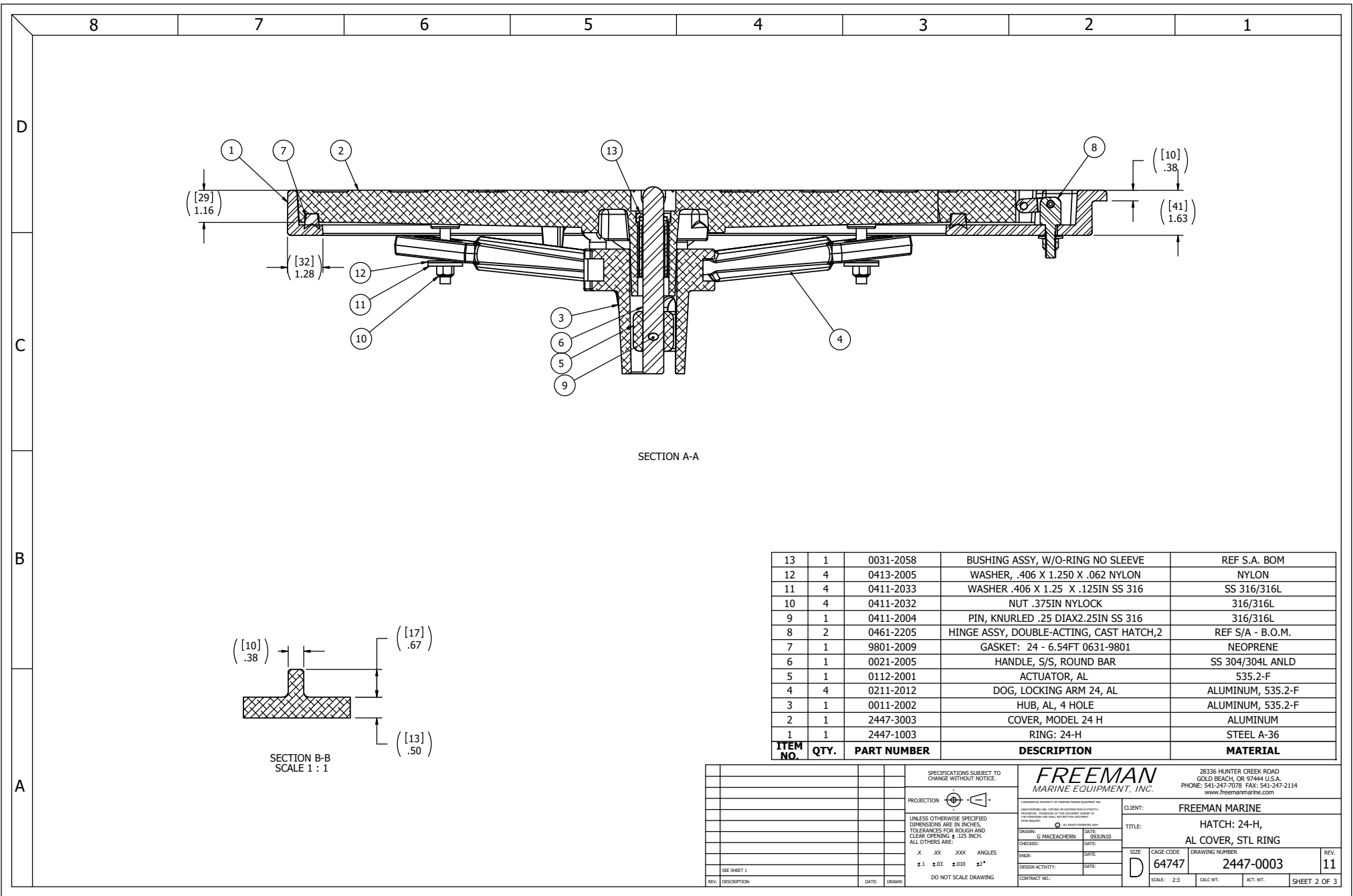
28236 HUNTER CREEK ROAD
GOLD BEACH, OR 97444 U.S.A.
PHONE: 541-247-7078 FAX: 541-247-2114
www.freemarinmarine.com

CLIENT: **FREEMAN MARINE**

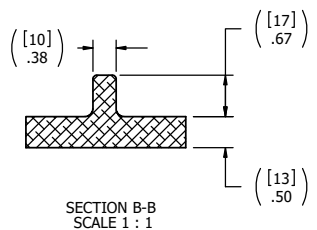
TITLE: **HATCH: 24-H, AL COVER, STL RING**

SIZE: **D** CAGE CODE: **64747** DRAWING NUMBER: **2447-0003** REV: **11**

SCALE: 1:3 CALC. WT. ACT. WT. SHEET 1 OF 3



SECTION A-A



ITEM NO.	QTY.	PART NUMBER	DESCRIPTION	MATERIAL
13	1	0031-2058	BUSHING ASSY, W/O-RING NO SLEEVE	REF S.A. BOM
12	4	0413-2005	WASHER .406 X 1.250 X .062 NYLON	NYLON
11	4	0411-2033	WASHER .406 X 1.25 X .125IN SS 316	SS 316/316L
10	4	0411-2032	NUT .375IN NYLOCK	316/316L
9	1	0411-2004	PIN, KNURLED .25 DIA X 2.25IN SS 316	316/316L
8	2	0461-2205	HINGE ASSY, DOUBLE-ACTING, CAST HATCH,2	REF S/A - B.O.M.
7	1	9801-2009	GASKET: 24 - 6.54FT 0631-9801	NEOPRENE
6	1	0021-2005	HANDLE, S/S, ROUND BAR	SS 304/304L ANLD
5	1	0112-2001	ACTUATOR, AL	535.2-F
4	4	0211-2012	DOG, LOCKING ARM 24, AL	ALUMINUM, 535.2-F
3	1	0011-2002	HUB, AL, 4 HOLE	ALUMINUM, 535.2-F
2	1	2447-3003	COVER, MODEL 24 H	ALUMINUM
1	1	2447-1003	RING: 24-H	STEEL A-36

SPECIFICATIONS SUBJECT TO CHANGE WITHOUT NOTICE. PROJECTION:		FREEMAN MARINE EQUIPMENT, INC. 28236 HUNTER CREEK ROAD GOLD BEACH, OR 97444 U.S.A. PHONE: 541-247-7078 FAX: 541-247-2114 www.freemarinmarine.com	
UNLESS OTHERWISE SPECIFIED DIMENSIONS ARE IN INCHES. TOLERANCES FOR ROUGH AND CLEAR OPENING: ±.125 INCH. ALL OTHERS ARE: .X .XX .XXX ANGLES ±.1 ±.03 ±.010 ±.2"		CLIENT: FREEMAN MARINE TITLE: HATCH: 24-H, AL COVER, STL RING	
DO NOT SCALE DRAWING		DRAWN: G. MACEACHERN DATE: GROUND CHECKED: DATE: ENGR: DATE: DESIGN ACTIVITY: DATE: CONTRACT NO.:	
SEE SHEET 1 REV. DESCRIPTION: DATE: DRAWN		SIZE: D CAGE CODE: 64747 DRAWING NUMBER: 2447-0003 REV. 11 SCALE: 2:3 CALC. WT. ACT. WT. SHEET 2 OF 3	

